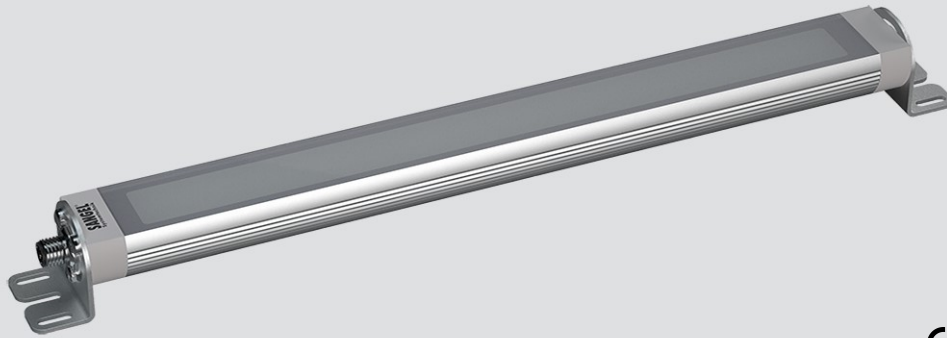


LED LR40 190 ESGd-30-M12-57

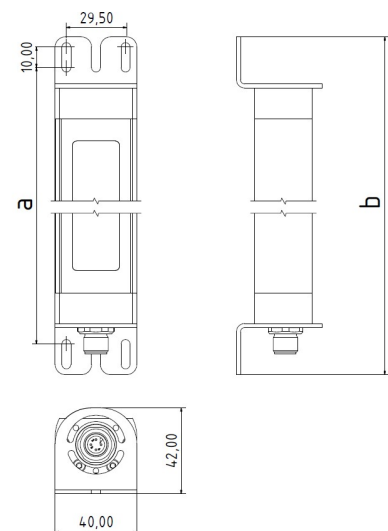
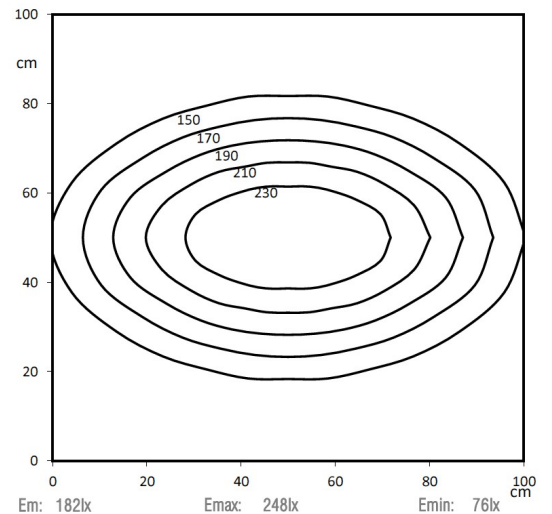
Art. Nr. 1-000000-06634

Ktl. Nr. 15070552

SANGEL[®]
Systemtechnik



Lichtfarbe / Light Colour	5700 K
Schutzart / Internal Protection	IP67
Netzanschluss / Main Supply	24 V DC
Dimmbar / Dimmable	nein
Bestückt / Fitted With	LED
Schutzklasse / Protection Class	3
Leistung / Power	5 W
Lichtstrom / Luminous Flux	489 lm
Farbtreue / Colour Rendering	RA / CRI ≥80
Betriebstemperatur / Operating Temp.	-20°C / 45°C
Lebensdauer / Lifetime	min. 60000 h
Optik / Optics	30°
Maße / Dimensions	a= 220, b= 240mm
Anschluss / Connection Type	M12, 5-pol, a-codiert
Kaskadierbar / Cascadable	nein
Gehäuse / Housing	Aluminium
Gewicht(Netto) / Weight(Net)	0,43 kg
Abdeckung / Cover	ESG
Befestigung / Fastening	drehbar
Zubehör / Equipment	Winkel inkl.

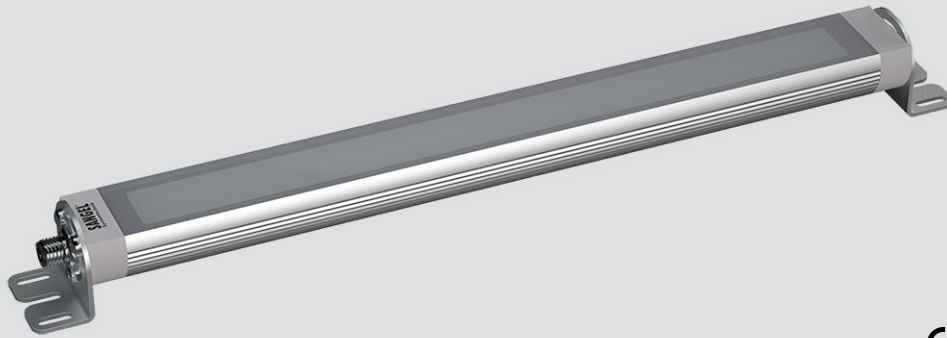


LED LR40 190 ESGd-30-M12D-57

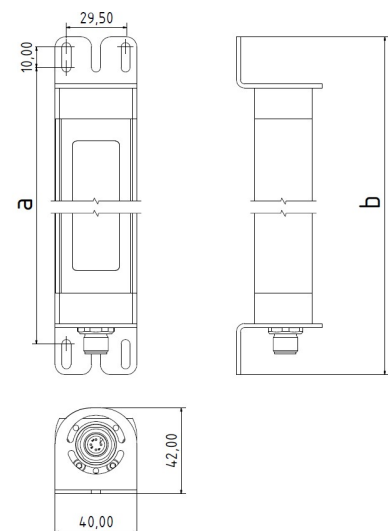
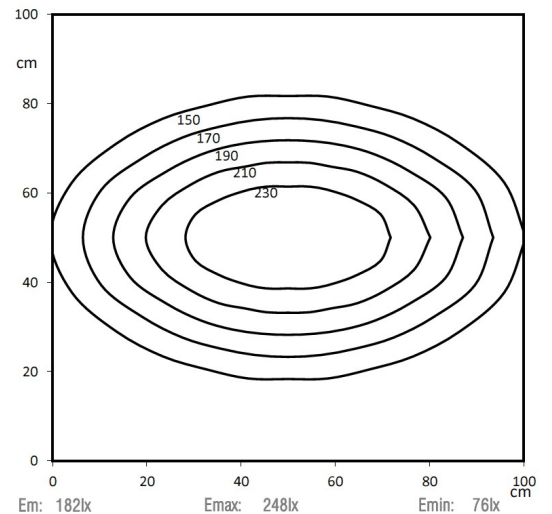
Art. Nr. 1-000000-06755

Ktl. Nr. 15070750

SANGEL[®]
Systemtechnik



Lichtfarbe / Light Colour	5700 K
Schutzart / Internal Protection	IP67
Netzanschluss / Main Supply	24 V DC
Dimmbar / Dimmable	nein
Bestückt / Fitted With	LED
Schutzklasse / Protection Class	3
Leistung / Power	5 W
Lichtstrom / Luminous Flux	489 lm
Farbtreue / Colour Rendering	RA / CRI ≥80
Betriebstemperatur / Operating Temp.	-20°C / 45°C
Lebensdauer / Lifetime	min. 60000 h
Optik / Optics	30°
Maße / Dimensions	a= 220, b= 240mm
Anschluss / Connection Type	M12, 5-pol, a-codiert
Kaskadierbar / Cascadable	ja
Gehäuse / Housing	Aluminium
Gewicht(Netto) / Weight(Net)	0,45 kg
Abdeckung / Cover	ESG
Befestigung / Fastening	drehbar
Zubehör / Equipment	Winkel inkl.

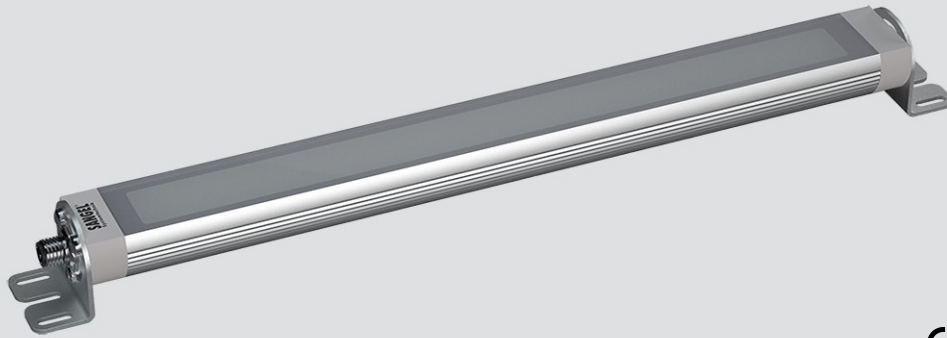


LED LR40 190 ESGd-0-M12-57

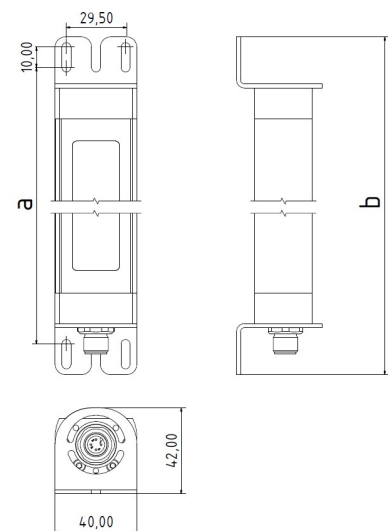
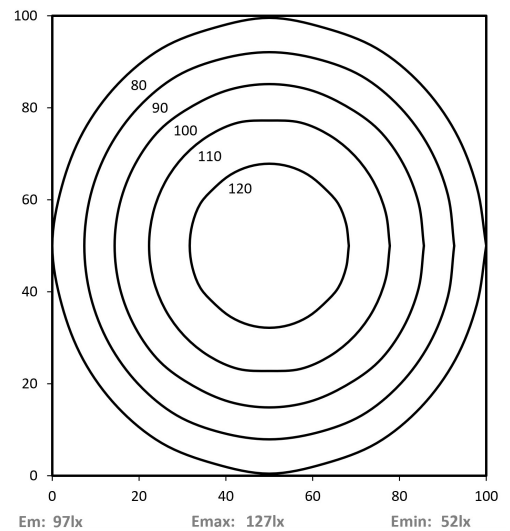
Art. Nr. 1-000000-06591

Ktl. Nr. 15070522

SANGEL[®]
Systemtechnik



Lichtfarbe / Light Colour	5700 K
Schutzart / Internal Protection	IP67
Netzanschluss / Main Supply	24 V DC
Dimmbar / Dimmable	nein
Bestückt / Fitted With	LED
Schutzklasse / Protection Class	3
Leistung / Power	5 W
Lichtstrom / Luminous Flux	489 lm
Farbtreue / Colour Rendering	RA / CRI ≥80
Betriebstemperatur / Operating Temp.	-20°C / 45°C
Lebensdauer / Lifetime	min. 60000 h
Optik / Optics	100°
Maße / Dimensions	a= 220, b= 240mm
Anschluss / Connection Type	M12, 5-pol, a-codiert
Kaskadierbar / Cascadable	nein
Gehäuse / Housing	Aluminium
Gewicht(Netto) / Weight(Net)	0,4 kg
Abdeckung / Cover	ESG
Befestigung / Fastening	drehbar
Zubehör / Equipment	Winkel inkl.

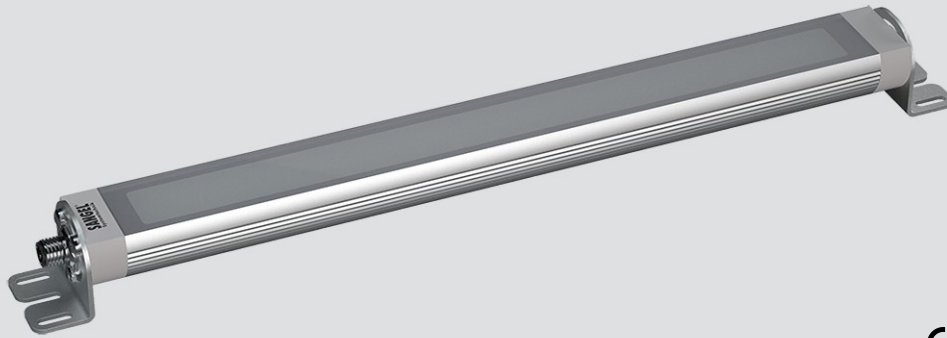


LED LR40 190 ESGd-0-M12D-57

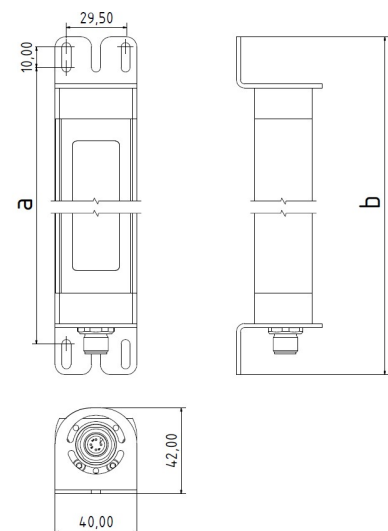
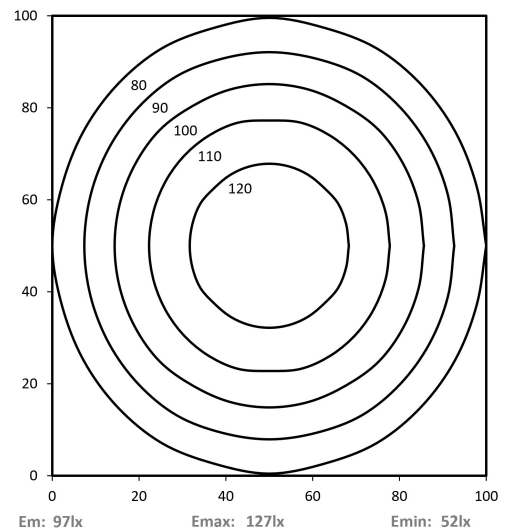
Art. Nr. 1-000000-06715

Ktl. Nr. 15070735

SANGEL[®]
Systemtechnik



Lichtfarbe / Light Colour	5700 K
Schutzart / Internal Protection	IP67
Netzanschluss / Main Supply	24 V DC
Dimmbar / Dimmable	nein
Bestückt / Fitted With	LED
Schutzklasse / Protection Class	3
Leistung / Power	5 W
Lichtstrom / Luminous Flux	489 lm
Farbtreue / Colour Rendering	RA / CRI ≥80
Betriebstemperatur / Operating Temp.	-20°C / 45°C
Lebensdauer / Lifetime	min. 60000 h
Optik / Optics	100°
Maße / Dimensions	a= 220, b= 240mm
Anschluss / Connection Type	M12, 5-pol, a-codiert
Kaskadierbar / Cascadable	ja
Gehäuse / Housing	Aluminium
Gewicht(Netto) / Weight(Net)	0,42 kg
Abdeckung / Cover	ESG
Befestigung / Fastening	drehbar
Zubehör / Equipment	Winkel inkl.

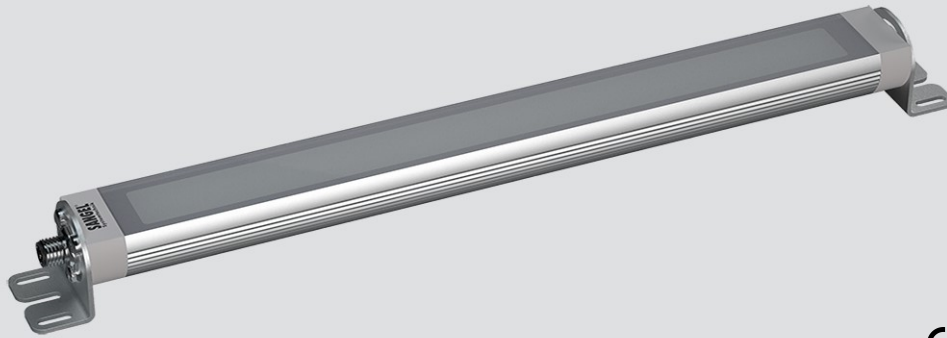


LED LR40 190 PMMA-0-M12-57

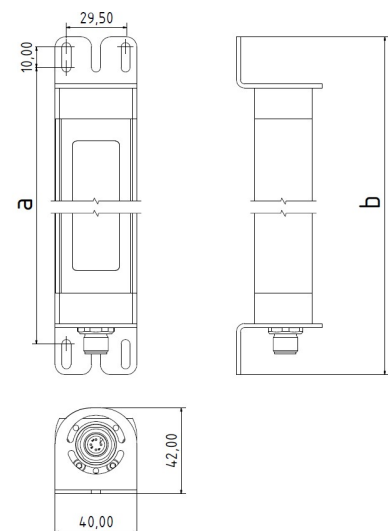
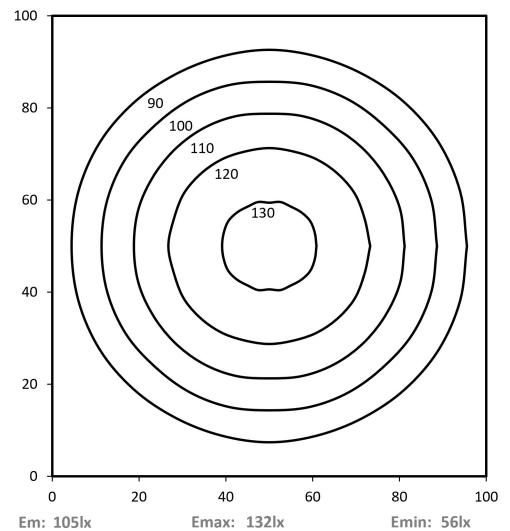
Art. Nr. 1-000000-06590

Ktl. Nr. 15070521

SANGEL[®]
Systemtechnik



Lichtfarbe / Light Colour	5700 K
Schutzart / Internal Protection	IP67
Netzanschluss / Main Supply	24 V DC
Dimmbar / Dimmable	nein
Bestückt / Fitted With	LED
Schutzklasse / Protection Class	3
Leistung / Power	5 W
Lichtstrom / Luminous Flux	489 lm
Farbtreue / Colour Rendering	RA / CRI ≥80
Betriebstemperatur / Operating Temp.	-20°C / 45°C
Lebensdauer / Lifetime	min. 60000 h
Optik / Optics	100°
Maße / Dimensions	a= 220, b= 240mm
Anschluss / Connection Type	M12, 5-pol, a-codiert
Kaskadierbar / Cascadable	nein
Gehäuse / Housing	Aluminium
Gewicht(Netto) / Weight(Net)	0,38 kg
Abdeckung / Cover	PMMA
Befestigung / Fastening	drehbar
Zubehör / Equipment	Winkel inkl.

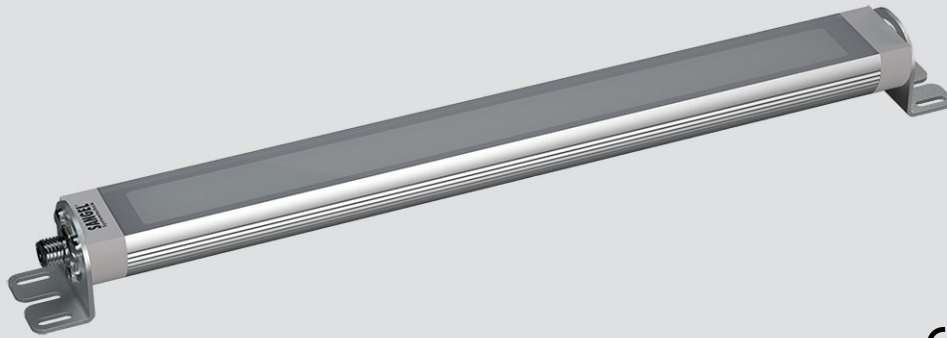


LED LR40 190 PMMA-0-M12D-57

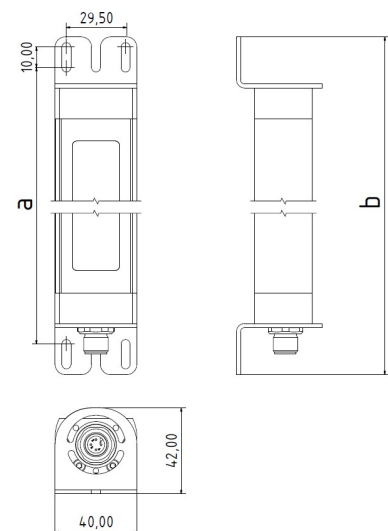
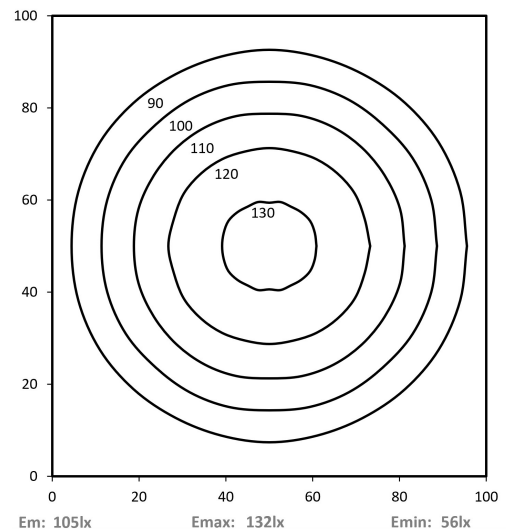
Art. Nr. 1-000000-06727

Ktl. Nr. 15070734

SANGEL[®]
Systemtechnik



Lichtfarbe / Light Colour	5700 K
Schutzart / Internal Protection	IP67
Netzanschluss / Main Supply	24 V DC
Dimmbar / Dimmable	nein
Bestückt / Fitted With	LED
Schutzklasse / Protection Class	3
Leistung / Power	5 W
Lichtstrom / Luminous Flux	489 lm
Farbtreue / Colour Rendering	RA / CRI ≥80
Betriebstemperatur / Operating Temp.	-20°C / 45°C
Lebensdauer / Lifetime	min. 60000 h
Optik / Optics	100°
Maße / Dimensions	a= 220, b= 240mm
Anschluss / Connection Type	M12, 5-pol, a-codiert
Kaskadierbar / Cascadable	ja
Gehäuse / Housing	Aluminium
Gewicht(Netto) / Weight(Net)	0,4 kg
Abdeckung / Cover	PMMA
Befestigung / Fastening	drehbar
Zubehör / Equipment	Winkel inkl.

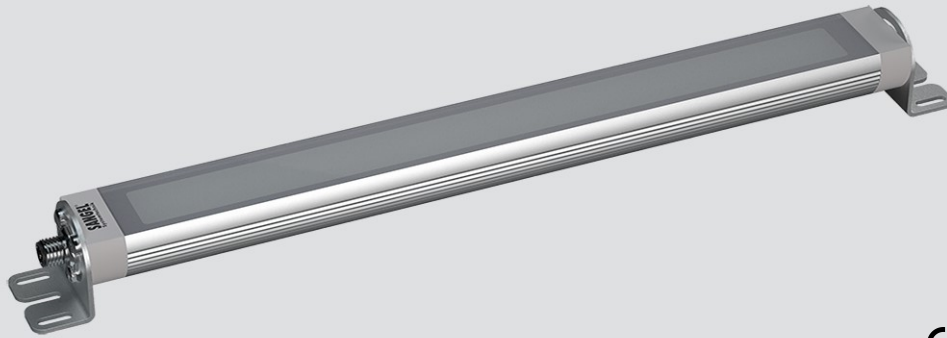


LED LR40 365 ESGd-30-M12-57

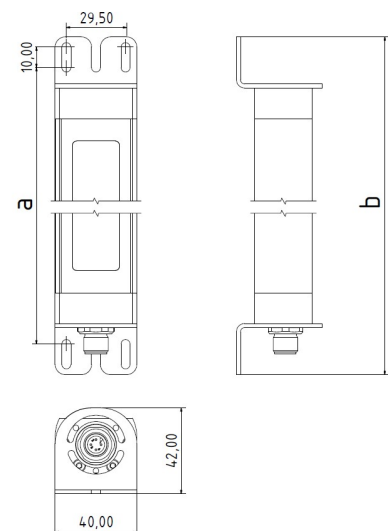
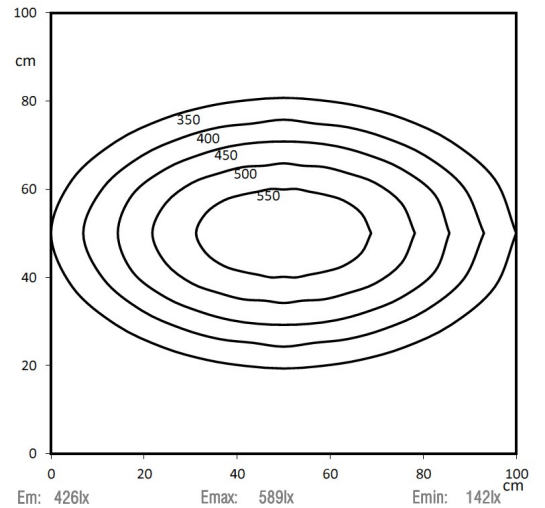
Art. Nr. 1-000000-06638

Ktl. Nr. 15070600

SANGEL[®]
Systemtechnik



Lichtfarbe / Light Colour	5700 K
Schutzart / Internal Protection	IP67
Netzanschluss / Main Supply	24 V DC
Dimmbar / Dimmable	nein
Bestückt / Fitted With	LED
Schutzklasse / Protection Class	3
Leistung / Power	10 W
Lichtstrom / Luminous Flux	1073 lm
Farbtreue / Colour Rendering	RA / CRI ≥80
Betriebstemperatur / Operating Temp.	-20°C / 45°C
Lebensdauer / Lifetime	min. 60000 h
Optik / Optics	30°
Maße / Dimensions	a= 395, b= 415mm
Anschluss / Connection Type	M12, 5-pol, a-codiert
Kaskadierbar / Cascadable	nein
Gehäuse / Housing	Aluminium
Gewicht(Netto) / Weight(Net)	0,81 kg
Abdeckung / Cover	ESG
Befestigung / Fastening	drehbar
Zubehör / Equipment	Winkel inkl.

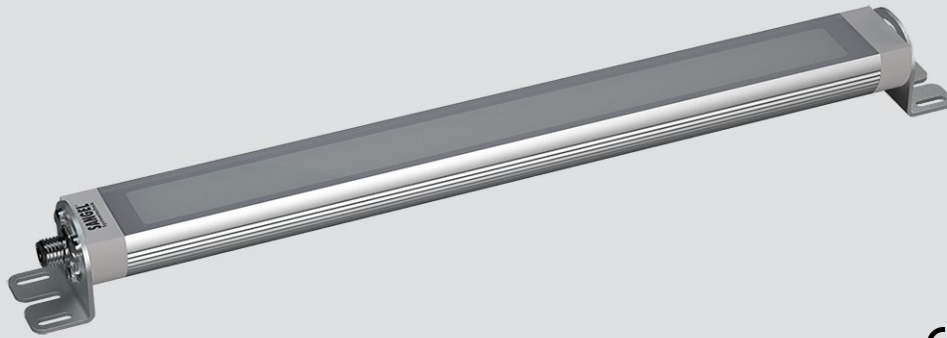


LED LR40 365 ESGd-30-M12D-57

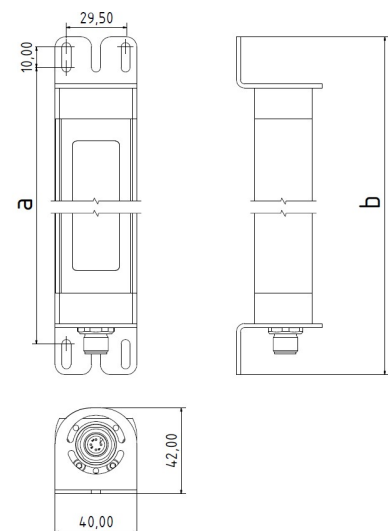
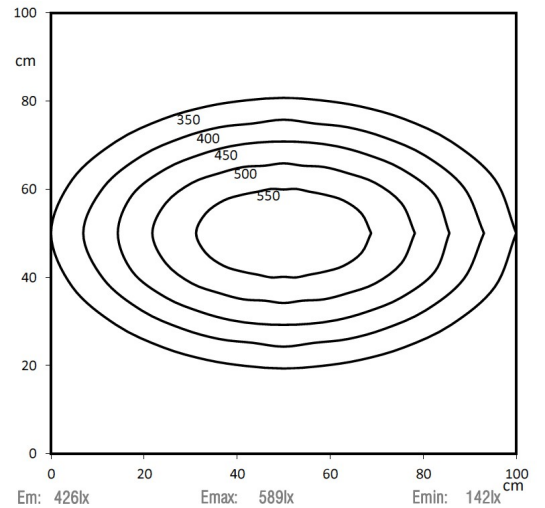
Art. Nr. 1-000000-06759

Ktl. Nr. 15070754

SANGEL[®]
Systemtechnik



Lichtfarbe / Light Colour	5700 K
Schutzart / Internal Protection	IP67
Netzanschluss / Main Supply	24 V DC
Dimmbar / Dimmable	nein
Bestückt / Fitted With	LED
Schutzklasse / Protection Class	3
Leistung / Power	10 W
Lichtstrom / Luminous Flux	1073 lm
Farbtreue / Colour Rendering	RA / CRI ≥80
Betriebstemperatur / Operating Temp.	-20°C / 45°C
Lebensdauer / Lifetime	min. 60000 h
Optik / Optics	30°
Maße / Dimensions	a= 395, b= 415mm
Anschluss / Connection Type	M12, 5-pol, a-codiert
Kaskadierbar / Cascadable	ja
Gehäuse / Housing	Aluminium
Gewicht(Netto) / Weight(Net)	0,83 kg
Abdeckung / Cover	ESG
Befestigung / Fastening	drehbar
Zubehör / Equipment	Winkel inkl.

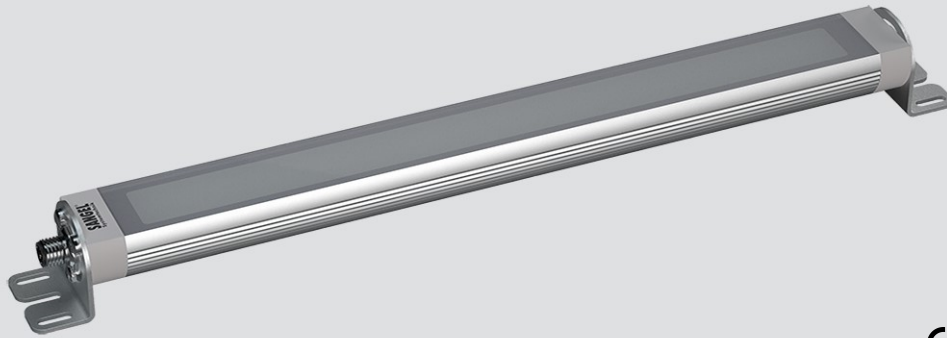


LED LR40 365 ESGd-0-M12-57

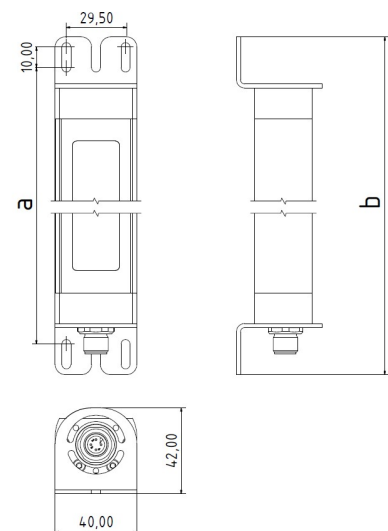
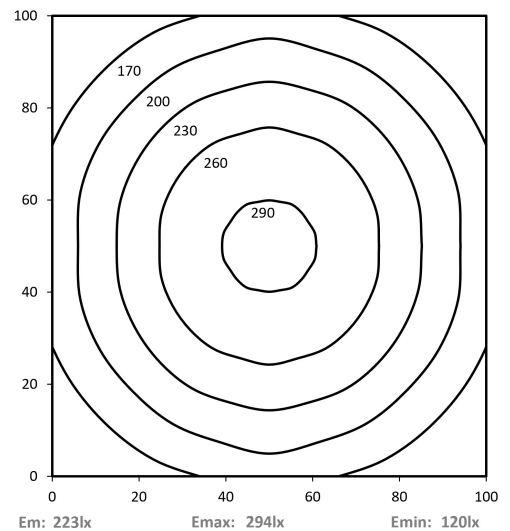
Art. Nr. 1-000000-06595

Ktl. Nr. 15070530

SANGEL[®]
Systemtechnik



Lichtfarbe / Light Colour	5700 K
Schutzart / Internal Protection	IP67
Netzanschluss / Main Supply	24 V DC
Dimmbar / Dimmable	nein
Bestückt / Fitted With	LED
Schutzklasse / Protection Class	3
Leistung / Power	10 W
Lichtstrom / Luminous Flux	1073 lm
Farbtreue / Colour Rendering	RA / CRI \geq 80
Betriebstemperatur / Operating Temp.	-20°C / 45°C
Lebensdauer / Lifetime	min. 60000 h
Optik / Optics	100°
Maße / Dimensions	a= 395, b= 415mm
Anschluss / Connection Type	M12, 5-pol, a-codiert
Kaskadierbar / Cascadable	nein
Gehäuse / Housing	Aluminium
Gewicht(Netto) / Weight(Net)	0,77 kg
Abdeckung / Cover	ESG
Befestigung / Fastening	drehbar
Zubehör / Equipment	Winkel inkl.

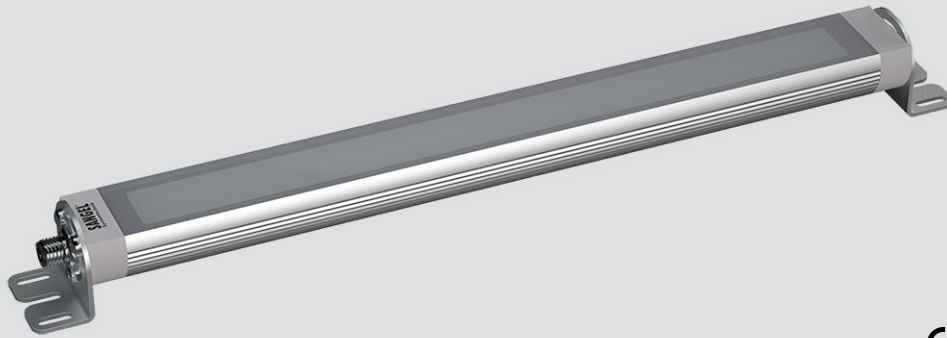


LED LR40 365 ESGd-0-M12D-57

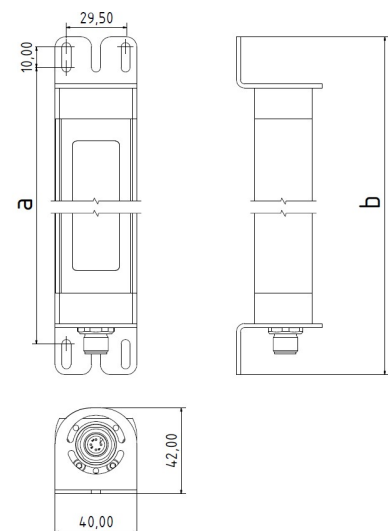
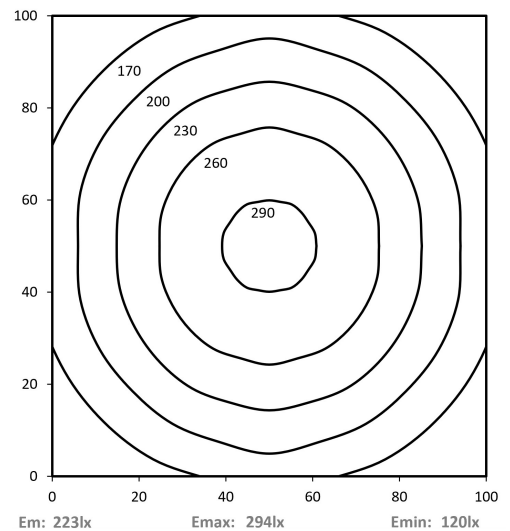
Art. Nr. 1-000000-06716

Ktl. Nr. 15070739

SANGEL[®]
Systemtechnik



Lichtfarbe / Light Colour	5700 K
Schutzart / Internal Protection	IP67
Netzanschluss / Main Supply	24 V DC
Dimmbar / Dimmable	nein
Bestückt / Fitted With	LED
Schutzklasse / Protection Class	3
Leistung / Power	10 W
Lichtstrom / Luminous Flux	1073 lm
Farbtreue / Colour Rendering	RA / CRI ≥80
Betriebstemperatur / Operating Temp.	-20°C / 45°C
Lebensdauer / Lifetime	min. 60000 h
Optik / Optics	100°
Maße / Dimensions	a= 395, b= 415mm
Anschluss / Connection Type	M12, 5-pol, a-codiert
Kaskadierbar / Cascadable	ja
Gehäuse / Housing	Aluminium
Gewicht(Netto) / Weight(Net)	0,79 kg
Abdeckung / Cover	ESG
Befestigung / Fastening	drehbar
Zubehör / Equipment	Winkel inkl.

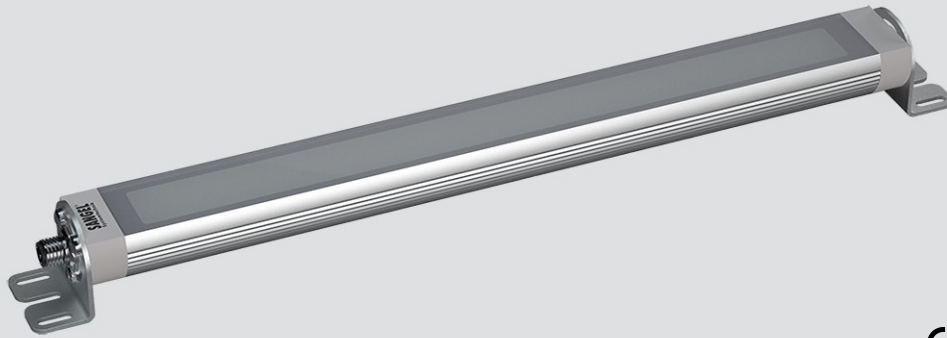


LED LR40 365 PMMA-0-M12-57

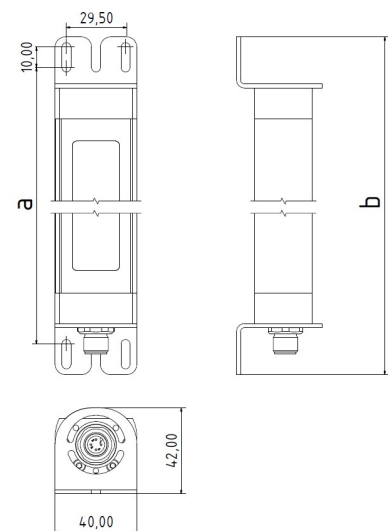
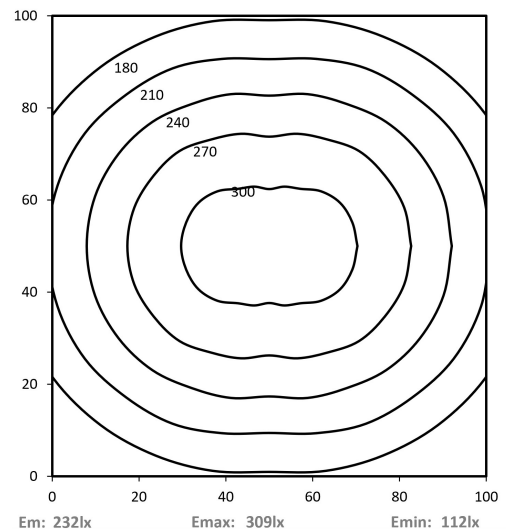
Art. Nr. 1-000000-06594

Ktl. Nr. 15070529

SANGEL[®]
Systemtechnik



Lichtfarbe / Light Colour	5700 K
Schutzart / Internal Protection	IP67
Netzanschluss / Main Supply	24 V DC
Dimmbar / Dimmable	nein
Bestückt / Fitted With	LED
Schutzklasse / Protection Class	3
Leistung / Power	10 W
Lichtstrom / Luminous Flux	1073 lm
Farbtreue / Colour Rendering	RA / CRI ≥80
Betriebstemperatur / Operating Temp.	-20°C / 45°C
Lebensdauer / Lifetime	min. 60000 h
Optik / Optics	100°
Maße / Dimensions	a= 395, b= 415mm
Anschluss / Connection Type	M12, 5-pol, a-codiert
Kaskadierbar / Cascadable	nein
Gehäuse / Housing	Aluminium
Gewicht(Netto) / Weight(Net)	0,73 kg
Abdeckung / Cover	PMMA
Befestigung / Fastening	drehbar
Zubehör / Equipment	Winkel inkl.

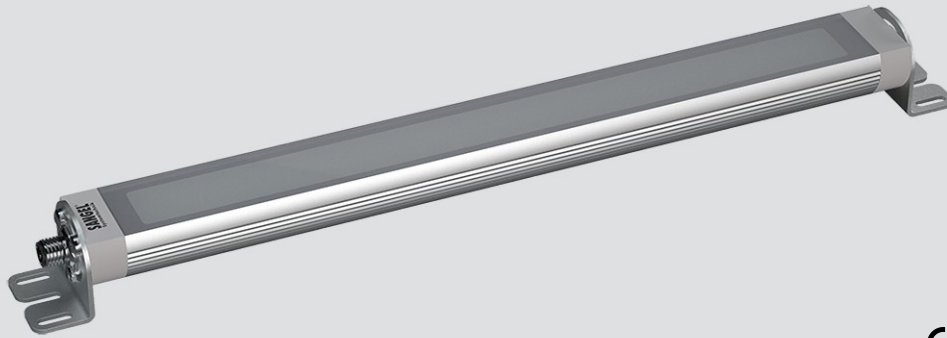


LED LR40 365 PMMA-0-M12D-57

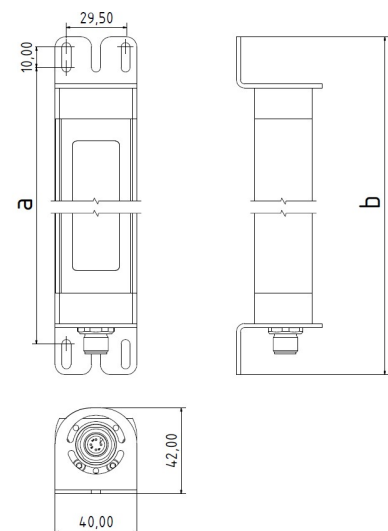
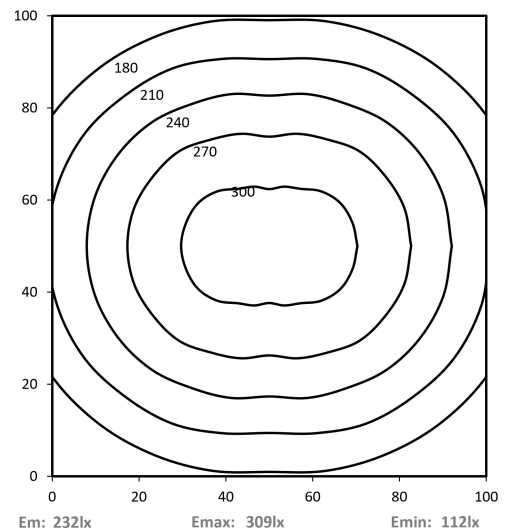
Art. Nr. 1-000000-06731

Ktl. Nr. 15070738

SANGEL[®]
Systemtechnik



Lichtfarbe / Light Colour	5700 K
Schutzart / Internal Protection	IP67
Netzanschluss / Main Supply	24 V DC
Dimmbar / Dimmable	nein
Bestückt / Fitted With	LED
Schutzklasse / Protection Class	3
Leistung / Power	10 W
Lichtstrom / Luminous Flux	1073 lm
Farbtreue / Colour Rendering	RA / CRI \geq 80
Betriebstemperatur / Operating Temp.	-20°C / 45°C
Lebensdauer / Lifetime	min. 60000 h
Optik / Optics	100°
Maße / Dimensions	a= 395, b= 415mm
Anschluss / Connection Type	M12, 5-pol, a-codiert
Kaskadierbar / Cascadable	ja
Gehäuse / Housing	Aluminium
Gewicht(Netto) / Weight(Net)	0,75 kg
Abdeckung / Cover	PMMA
Befestigung / Fastening	drehbar
Zubehör / Equipment	Winkel inkl.

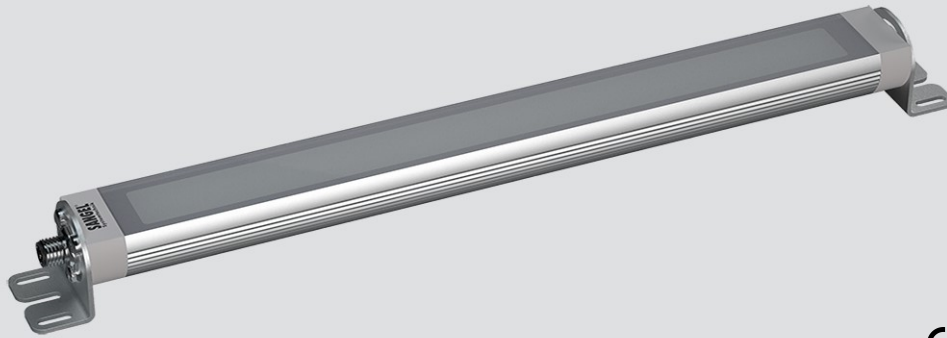


LED LR40 540 ESGd-30-M12-57

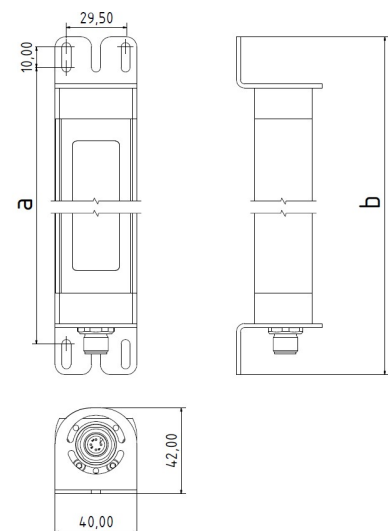
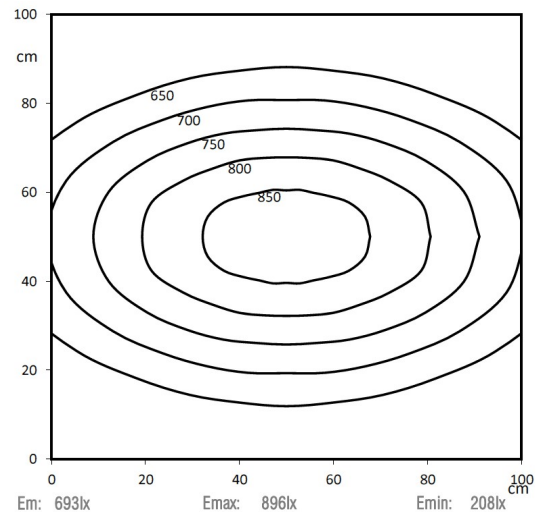
Art. Nr. 1-000000-06642

Ktl. Nr. 15070608

SANGEL[®]
Systemtechnik



Lichtfarbe / Light Colour	5700 K
Schutzart / Internal Protection	IP67
Netzanschluss / Main Supply	24 V DC
Dimmbar / Dimmable	nein
Bestückt / Fitted With	LED
Schutzklasse / Protection Class	3
Leistung / Power	15,1 W
Lichtstrom / Luminous Flux	1660 lm
Farbtreue / Colour Rendering	RA / CRI ≥80
Betriebstemperatur / Operating Temp.	-20°C / 45°C
Lebensdauer / Lifetime	min. 60000 h
Optik / Optics	30°
Maße / Dimensions	a= 570, b= 590mm
Anschluss / Connection Type	M12, 5-pol, a-codiert
Kaskadierbar / Cascadable	nein
Gehäuse / Housing	Aluminium
Gewicht(Netto) / Weight(Net)	1,25 kg
Abdeckung / Cover	ESG
Befestigung / Fastening	drehbar
Zubehör / Equipment	Winkel inkl.

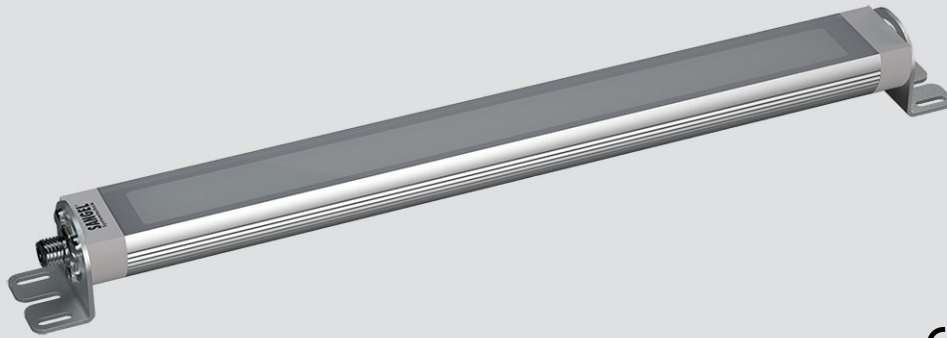


LED LR40 540 ESGd-30-M12D-57

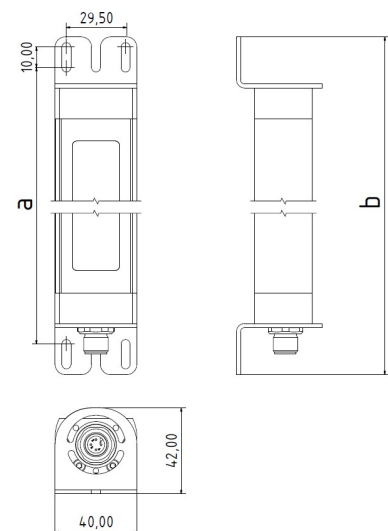
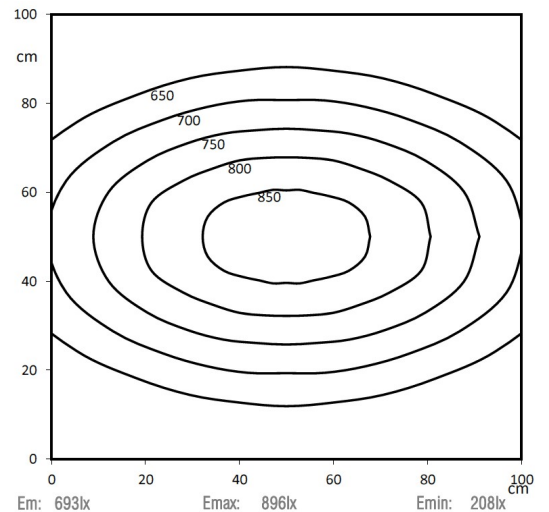
Art. Nr. 1-000000-06763

Ktl. Nr. 15070758

SANGEL[®]
Systemtechnik



Lichtfarbe / Light Colour	5700 K
Schutzart / Internal Protection	IP67
Netzanschluss / Main Supply	24 V DC
Dimmbar / Dimmable	nein
Bestückt / Fitted With	LED
Schutzklasse / Protection Class	3
Leistung / Power	15,1 W
Lichtstrom / Luminous Flux	1660 lm
Farbtreue / Colour Rendering	RA / CRI ≥80
Betriebstemperatur / Operating Temp.	-20°C / 45°C
Lebensdauer / Lifetime	min. 60000 h
Optik / Optics	30°
Maße / Dimensions	a= 570, b= 590mm
Anschluss / Connection Type	M12, 5-pol, a-codiert
Kaskadierbar / Cascadable	ja
Gehäuse / Housing	Aluminium
Gewicht(Netto) / Weight(Net)	1,27 kg
Abdeckung / Cover	ESG
Befestigung / Fastening	drehbar
Zubehör / Equipment	Winkel inkl.

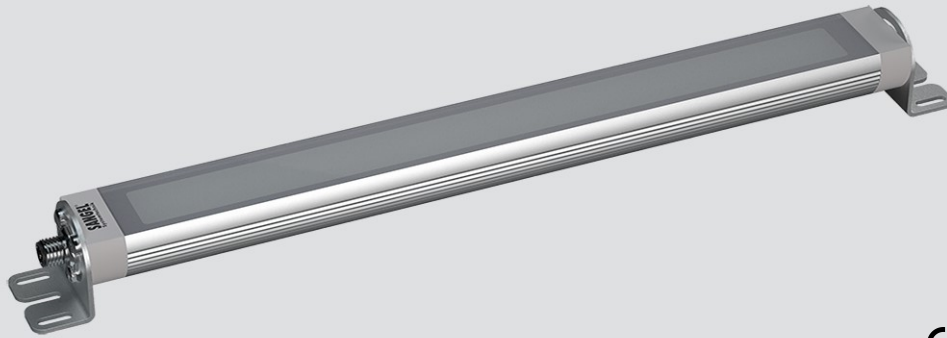


LED LR40 540 ESGd-0-M12-57

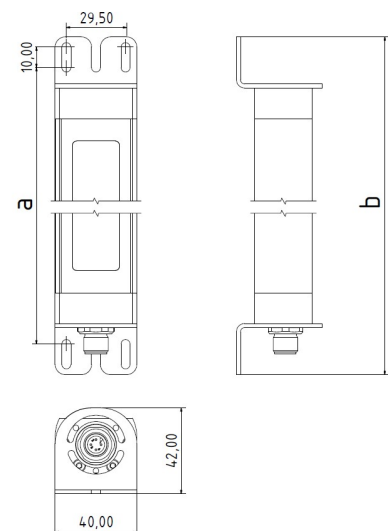
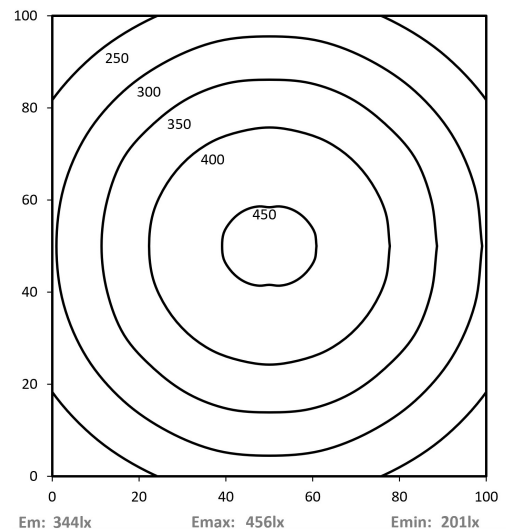
Art. Nr. 1-000000-06599

Ktl. Nr. 15070538

SANGEL[®]
Systemtechnik



Lichtfarbe / Light Colour	5700 K
Schutzart / Internal Protection	IP67
Netzanschluss / Main Supply	24 V DC
Dimmbar / Dimmable	nein
Bestückt / Fitted With	LED
Schutzklasse / Protection Class	3
Leistung / Power	15,1 W
Lichtstrom / Luminous Flux	1660 lm
Farbtreue / Colour Rendering	RA / CRI ≥80
Betriebstemperatur / Operating Temp.	-20°C / 45°C
Lebensdauer / Lifetime	min. 60000 h
Optik / Optics	100°
Maße / Dimensions	a= 570, b= 590mm
Anschluss / Connection Type	M12, 5-pol, a-codiert
Kaskadierbar / Cascadable	nein
Gehäuse / Housing	Aluminium
Gewicht(Netto) / Weight(Net)	1,14 kg
Abdeckung / Cover	ESG
Befestigung / Fastening	drehbar
Zubehör / Equipment	Winkel inkl.

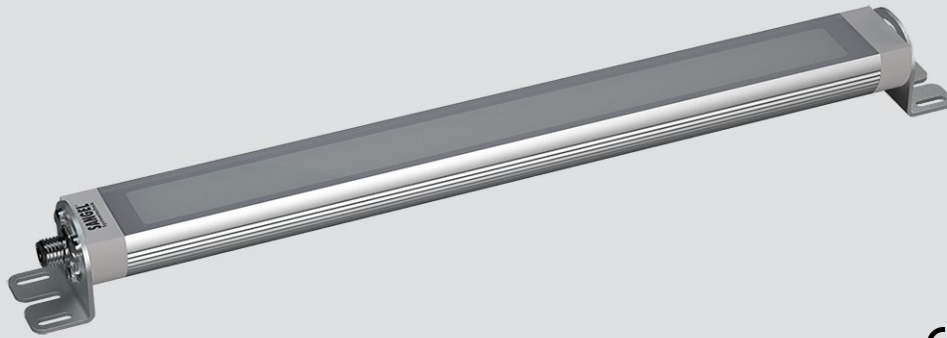


LED LR40 540 ESGd-0-M12D-57

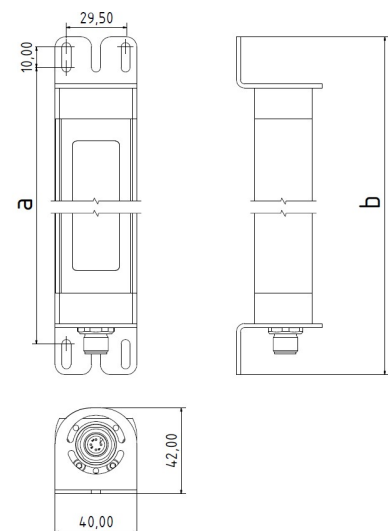
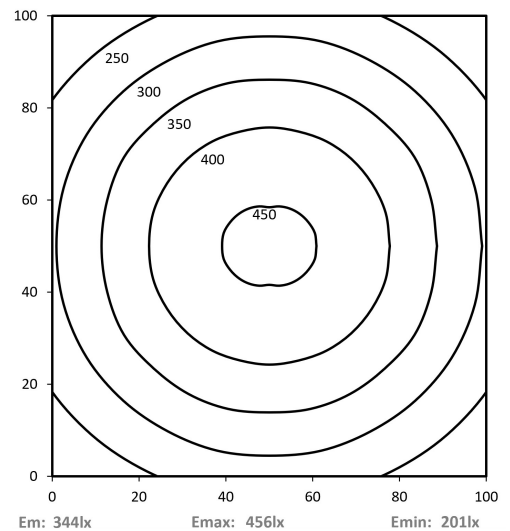
Art. Nr. 1-000000-06717

Ktl. Nr. 15070743

SANGEL[®]
Systemtechnik



Lichtfarbe / Light Colour	5700 K
Schutzart / Internal Protection	IP67
Netzanschluss / Main Supply	24 V DC
Dimmbar / Dimmable	nein
Bestückt / Fitted With	LED
Schutzklasse / Protection Class	3
Leistung / Power	15,1 W
Lichtstrom / Luminous Flux	1660 lm
Farbtreue / Colour Rendering	RA / CRI ≥80
Betriebstemperatur / Operating Temp.	-20°C / 45°C
Lebensdauer / Lifetime	min. 60000 h
Optik / Optics	100°
Maße / Dimensions	a= 570, b= 590mm
Anschluss / Connection Type	M12, 5-pol, a-codiert
Kaskadierbar / Cascadable	ja
Gehäuse / Housing	Aluminium
Gewicht(Netto) / Weight(Net)	1,16 kg
Abdeckung / Cover	ESG
Befestigung / Fastening	drehbar
Zubehör / Equipment	Winkel inkl.

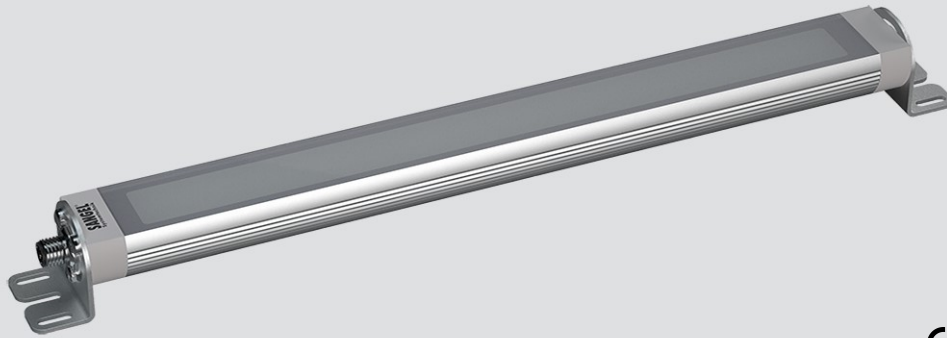


LED LR40 540 PMMA-0-M12-57

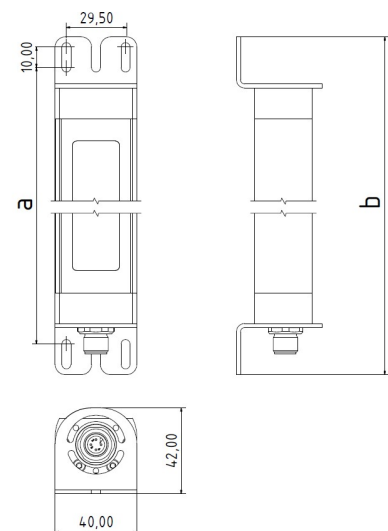
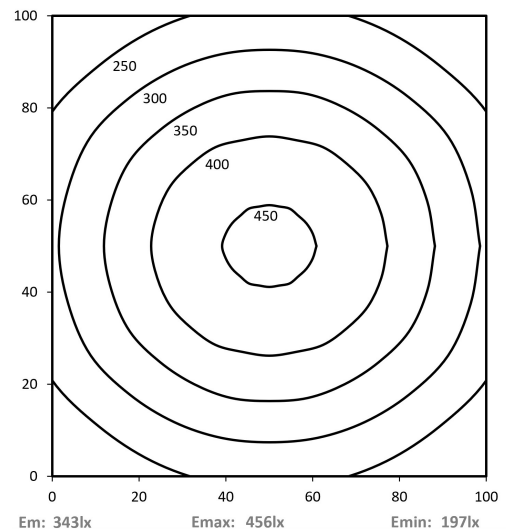
Art. Nr. 1-000000-06598

Ktl. Nr. 15070537

SANGEL[®]
Systemtechnik



Lichtfarbe / Light Colour	5700 K
Schutzart / Internal Protection	IP67
Netzanschluss / Main Supply	24 V DC
Dimmbar / Dimmable	nein
Bestückt / Fitted With	LED
Schutzklasse / Protection Class	3
Leistung / Power	15,1 W
Lichtstrom / Luminous Flux	1660 lm
Farbtreue / Colour Rendering	RA / CRI ≥80
Betriebstemperatur / Operating Temp.	-20°C / 45°C
Lebensdauer / Lifetime	min. 60000 h
Optik / Optics	100°
Maße / Dimensions	a= 570, b= 590mm
Anschluss / Connection Type	M12, 5-pol, a-codiert
Kaskadierbar / Cascadable	nein
Gehäuse / Housing	Aluminium
Gewicht(Netto) / Weight(Net)	1,08 kg
Abdeckung / Cover	PMMA
Befestigung / Fastening	drehbar
Zubehör / Equipment	Winkel inkl.

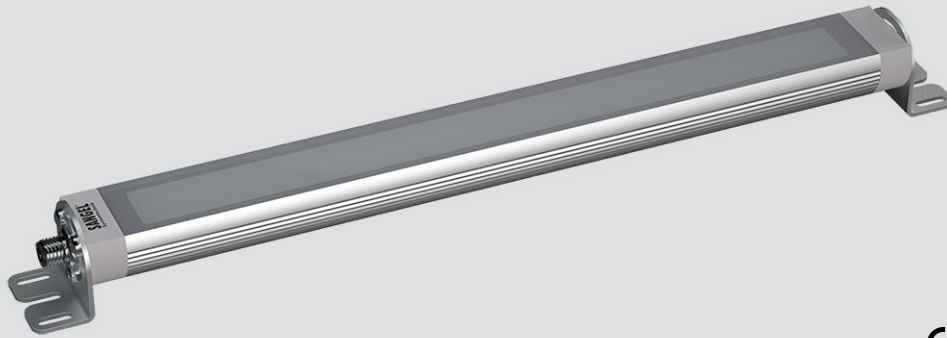


LED LR40 540 PMMA-0-M12D-57

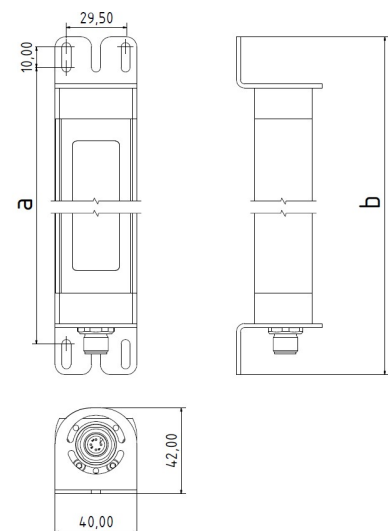
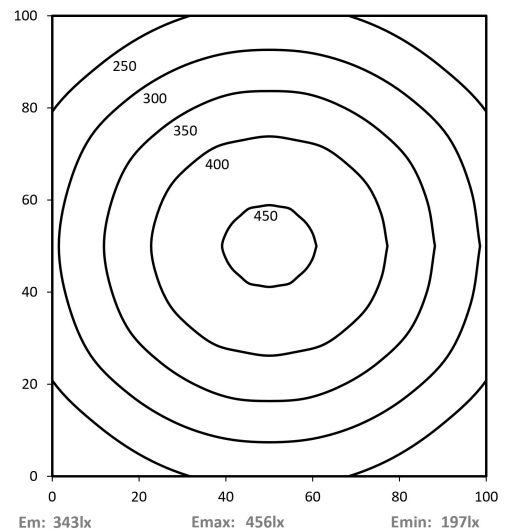
Art. Nr. 1-000000-06734

Ktl. Nr. 15070742

SANGEL[®]
Systemtechnik



Lichtfarbe / Light Colour	5700 K
Schutzart / Internal Protection	IP67
Netzanschluss / Main Supply	24 V DC
Dimmbar / Dimmable	nein
Bestückt / Fitted With	LED
Schutzklasse / Protection Class	3
Leistung / Power	15,1 W
Lichtstrom / Luminous Flux	1660 lm
Farbtreue / Colour Rendering	RA / CRI ≥80
Betriebstemperatur / Operating Temp.	-20°C / 45°C
Lebensdauer / Lifetime	min. 60000 h
Optik / Optics	100°
Maße / Dimensions	a= 570, b= 590mm
Anschluss / Connection Type	M12, 5-pol, a-codiert
Kaskadierbar / Cascadable	ja
Gehäuse / Housing	Aluminium
Gewicht(Netto) / Weight(Net)	1,1 kg
Abdeckung / Cover	PMMA
Befestigung / Fastening	drehbar
Zubehör / Equipment	Winkel inkl.

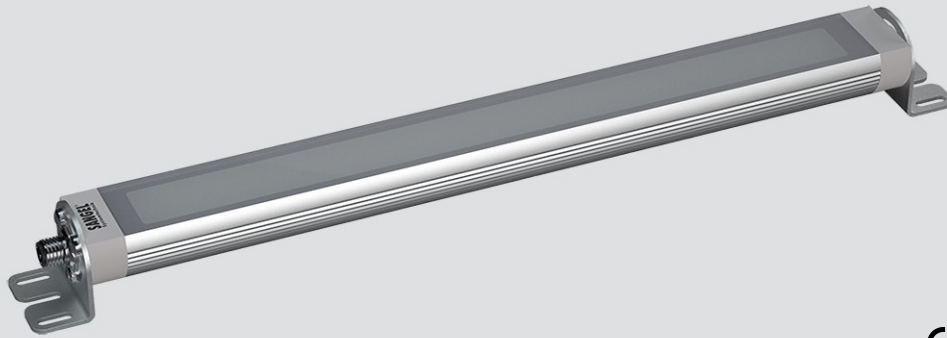


LED LR40 715 ESGd-30-M12-57

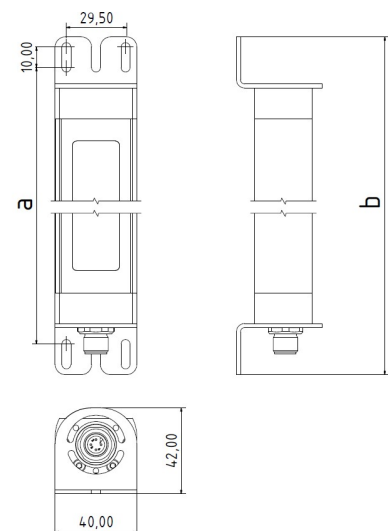
Art. Nr. 1-000000-06646

Ktl. Nr. 15070616

SANGEL[®]
Systemtechnik



Lichtfarbe / Light Colour	5700 K
Schutzart / Internal Protection	IP67
Netzanschluss / Main Supply	24 V DC
Dimmbar / Dimmable	nein
Bestückt / Fitted With	LED
Schutzklasse / Protection Class	3
Leistung / Power	20,2 W
Lichtstrom / Luminous Flux	2246 lm
Farbtreue / Colour Rendering	RA / CRI ≥80
Betriebstemperatur / Operating Temp.	-20°C / 45°C
Lebensdauer / Lifetime	min. 60000 h
Optik / Optics	30°
Maße / Dimensions	a= 745, b= 765mm
Anschluss / Connection Type	M12, 5-pol, a-codiert
Kaskadierbar / Cascadable	nein
Gehäuse / Housing	Aluminium
Gewicht(Netto) / Weight(Net)	1,72 kg
Abdeckung / Cover	ESG
Befestigung / Fastening	drehbar
Zubehör / Equipment	Winkel inkl.

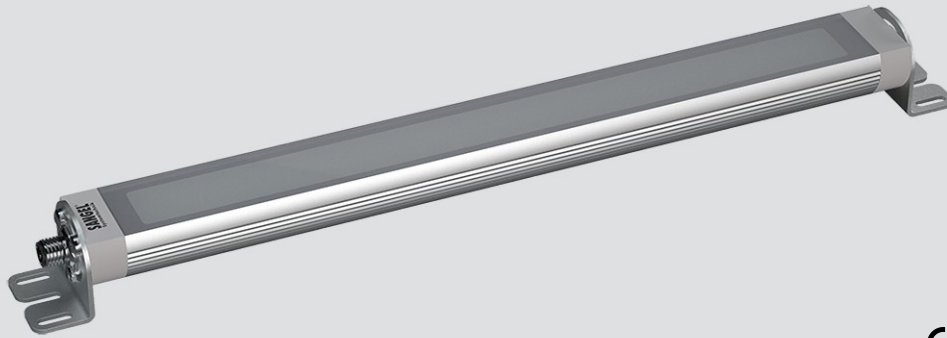


LED LR40 715 ESGd-30-M12D-57

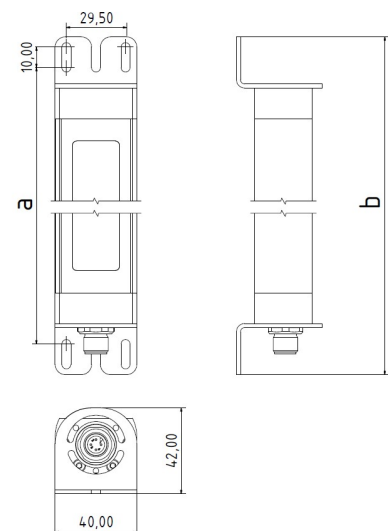
Art. Nr. 1-000000-06767

Ktl. Nr. 15070762

SANGEL[®]
Systemtechnik



Lichtfarbe / Light Colour	5700 K
Schutzart / Internal Protection	IP67
Netzanschluss / Main Supply	24 V DC
Dimmbar / Dimmable	nein
Bestückt / Fitted With	LED
Schutzklasse / Protection Class	3
Leistung / Power	20,2 W
Lichtstrom / Luminous Flux	2246 lm
Farbtreue / Colour Rendering	RA / CRI ≥80
Betriebstemperatur / Operating Temp.	-20°C / 45°C
Lebensdauer / Lifetime	min. 60000 h
Optik / Optics	30°
Maße / Dimensions	a= 745, b= 765mm
Anschluss / Connection Type	M12, 5-pol, a-codiert
Kaskadierbar / Cascadable	ja
Gehäuse / Housing	Aluminium
Gewicht(Netto) / Weight(Net)	1,74 kg
Abdeckung / Cover	ESG
Befestigung / Fastening	drehbar
Zubehör / Equipment	Winkel inkl.

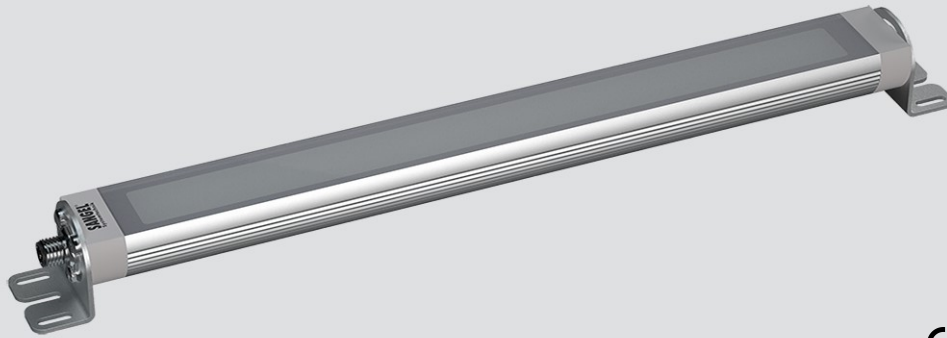


LED LR40 715 ESGd-0-M12-57

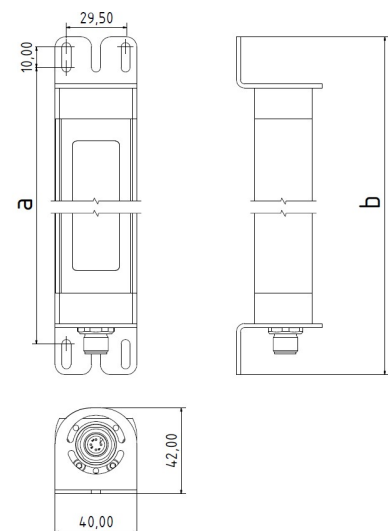
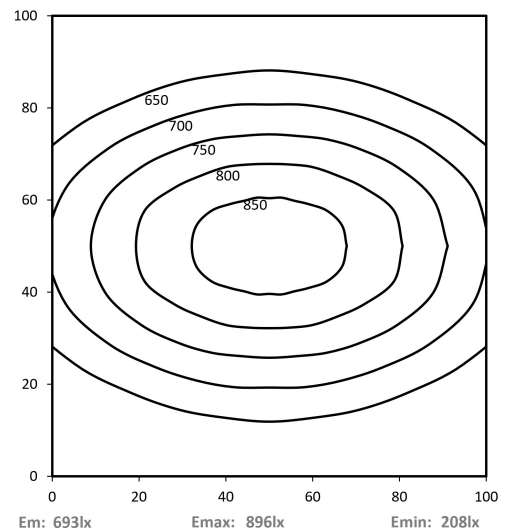
Art. Nr. 1-000000-06603

Ktl. Nr. 15070546

SANGEL[®]
Systemtechnik



Lichtfarbe / Light Colour	5700 K
Schutzart / Internal Protection	IP67
Netzanschluss / Main Supply	24 V DC
Dimmbar / Dimmable	nein
Bestückt / Fitted With	LED
Schutzklasse / Protection Class	3
Leistung / Power	20,2 W
Lichtstrom / Luminous Flux	2246 lm
Farbtreue / Colour Rendering	RA / CRI ≥80
Betriebstemperatur / Operating Temp.	-20°C / 45°C
Lebensdauer / Lifetime	min. 60000 h
Optik / Optics	100°
Maße / Dimensions	a= 745, b= 765mm
Anschluss / Connection Type	M12, 5-pol, a-codiert
Kaskadierbar / Cascadable	nein
Gehäuse / Housing	Aluminium
Gewicht(Netto) / Weight(Net)	1,51 kg
Abdeckung / Cover	ESG
Befestigung / Fastening	drehbar
Zubehör / Equipment	Winkel inkl.

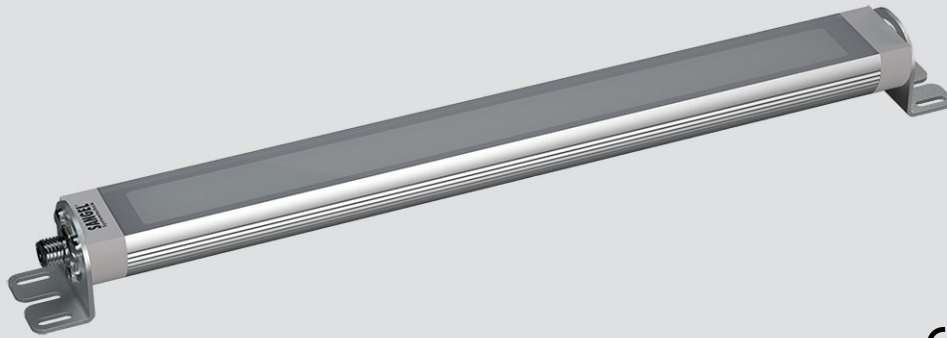


LED LR40 715 ESGd-0-M12D-57

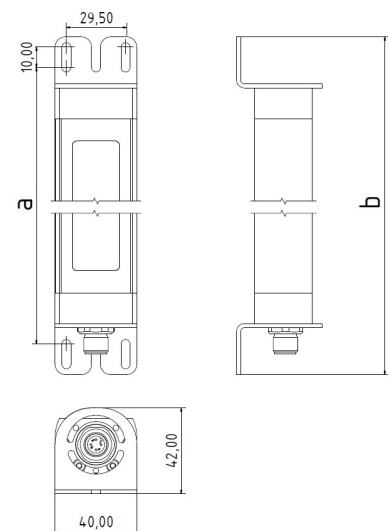
Art. Nr. 1-000000-06700

Ktl. Nr. 15070747

SANGEL[®]
Systemtechnik



Lichtfarbe / Light Colour	5700 K
Schutzart / Internal Protection	IP67
Netzanschluss / Main Supply	24 V DC
Dimmbar / Dimmable	nein
Bestückt / Fitted With	LED
Schutzklasse / Protection Class	3
Leistung / Power	20,2 W
Lichtstrom / Luminous Flux	2246 lm
Farbtreue / Colour Rendering	RA / CRI ≥80
Betriebstemperatur / Operating Temp.	-20°C / 45°C
Lebensdauer / Lifetime	min. 60000 h
Optik / Optics	100°
Maße / Dimensions	a= 745, b= 765mm
Anschluss / Connection Type	M12, 5-pol, a-codiert
Kaskadierbar / Cascadable	ja
Gehäuse / Housing	Aluminium
Gewicht(Netto) / Weight(Net)	1,53 kg
Abdeckung / Cover	ESG
Befestigung / Fastening	drehbar
Zubehör / Equipment	Winkel inkl.

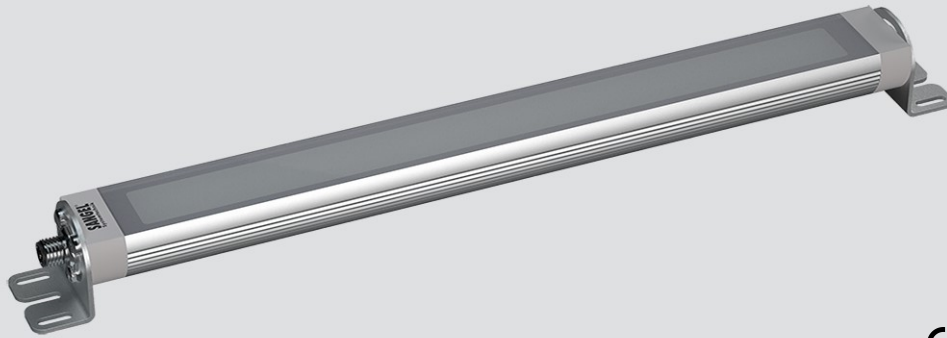


LED LR40 715 PMMA-0-M12-57

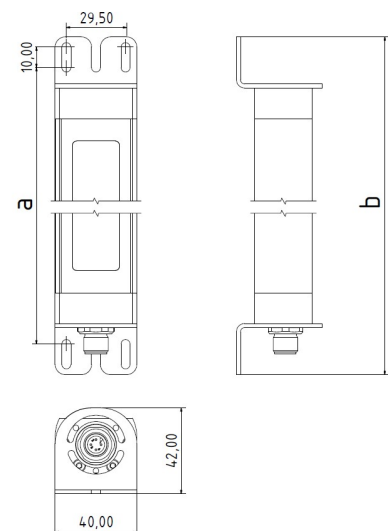
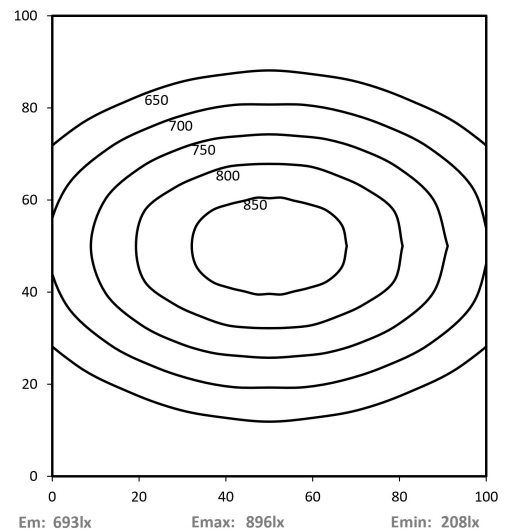
Art. Nr. 1-000000-06602

Ktl. Nr. 15070545

SANGEL[®]
Systemtechnik



Lichtfarbe / Light Colour	5700 K
Schutzart / Internal Protection	IP67
Netzanschluss / Main Supply	24 V DC
Dimmbar / Dimmable	nein
Bestückt / Fitted With	LED
Schutzklasse / Protection Class	3
Leistung / Power	20,2 W
Lichtstrom / Luminous Flux	2246 lm
Farbtreue / Colour Rendering	RA / CRI \geq 80
Betriebstemperatur / Operating Temp.	-20°C / 45°C
Lebensdauer / Lifetime	min. 60000 h
Optik / Optics	100°
Maße / Dimensions	a= 745, b= 765mm
Anschluss / Connection Type	M12, 5-pol, a-codiert
Kaskadierbar / Cascadable	nein
Gehäuse / Housing	Aluminium
Gewicht(Netto) / Weight(Net)	1,51 kg
Abdeckung / Cover	PMMA
Befestigung / Fastening	drehbar
Zubehör / Equipment	Winkel inkl.

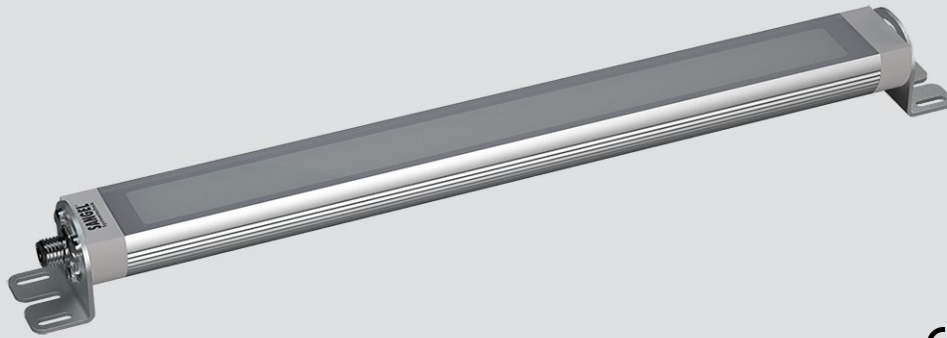


LED LR40 715 PMMA-0-M12D-57

Art. Nr. 1-000000-06737

Ktl. Nr. 15070746

SANGEL[®]
Systemtechnik



Lichtfarbe / Light Colour	5700 K
Schutzart / Internal Protection	IP67
Netzanschluss / Main Supply	24 V DC
Dimmbar / Dimmable	nein
Bestückt / Fitted With	LED
Schutzklasse / Protection Class	3
Leistung / Power	20,2 W
Lichtstrom / Luminous Flux	2246 lm
Farbtreue / Colour Rendering	RA / CRI ≥80
Betriebstemperatur / Operating Temp.	-20°C / 45°C
Lebensdauer / Lifetime	min. 60000 h
Optik / Optics	100°
Maße / Dimensions	a= 745, b= 765mm
Anschluss / Connection Type	M12, 5-pol, a-codiert
Kaskadierbar / Cascadable	ja
Gehäuse / Housing	Aluminium
Gewicht(Netto) / Weight(Net)	1,53 kg
Abdeckung / Cover	PMMA
Befestigung / Fastening	drehbar
Zubehör / Equipment	Winkel inkl.

