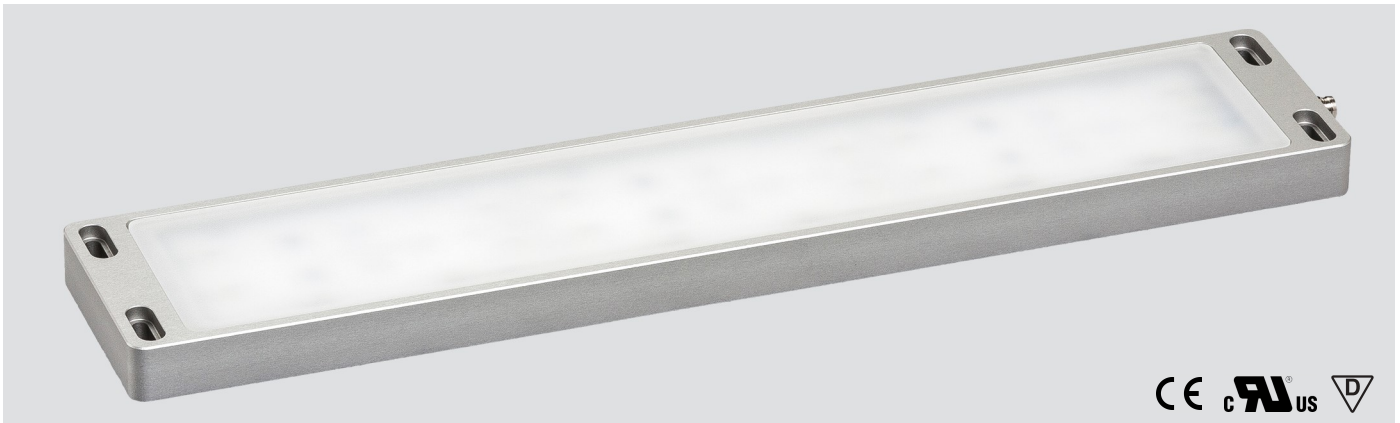


LED FLS 150 ESGd-M8-57

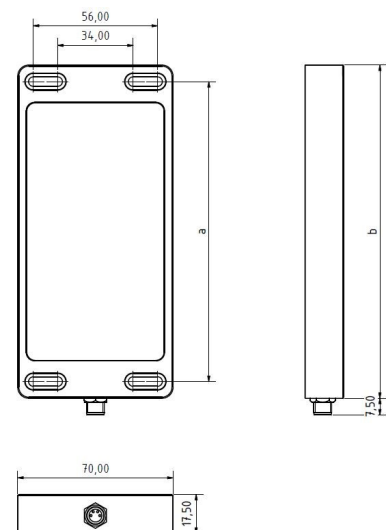
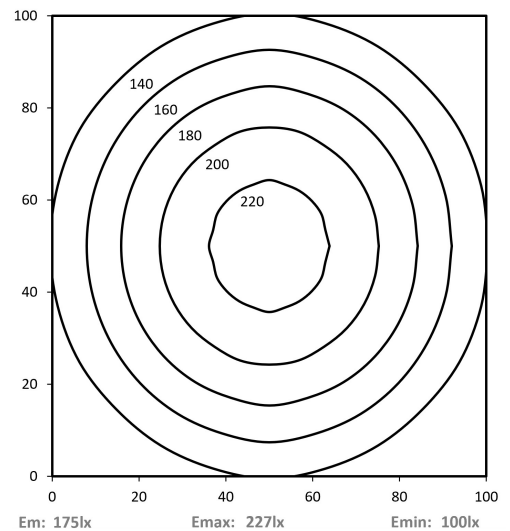
Art. Nr. 1-000000-06166

Ktl. Nr. 15070151

SANGEL[®]
Systemtechnik



Lichtfarbe / Light Colour	5700 K
Schutzart / Internal Protection	IP67
Netzanschluss / Main Supply	24 V DC
Dimmbar / Dimmable	nein
Bestückt / Fitted With	LED
Schutzklasse / Protection Class	3
Leistung / Power	5,5 W
Lichtstrom / Luminous Flux	804 lm
Farbtreue / Colour Rendering	RA / CRI ≥80
Betriebstemperatur / Operating Temp.	-20°C / 45°C
Lebensdauer / Lifetime	min. 60000 h
Optik / Optics	100°
Maße / Dimensions	a= 135, b= 150mm
Anschluss / Connection Type	M8, 4-pol, a-codiert
Kaskadierbar / Cascadable	nein
Gehäuse / Housing	Aluminium
Gewicht(Netto) / Weight(Net)	0,57 kg
Abdeckung / Cover	ESG
Befestigung / Fastening	starr
Zubehör / Equipment	

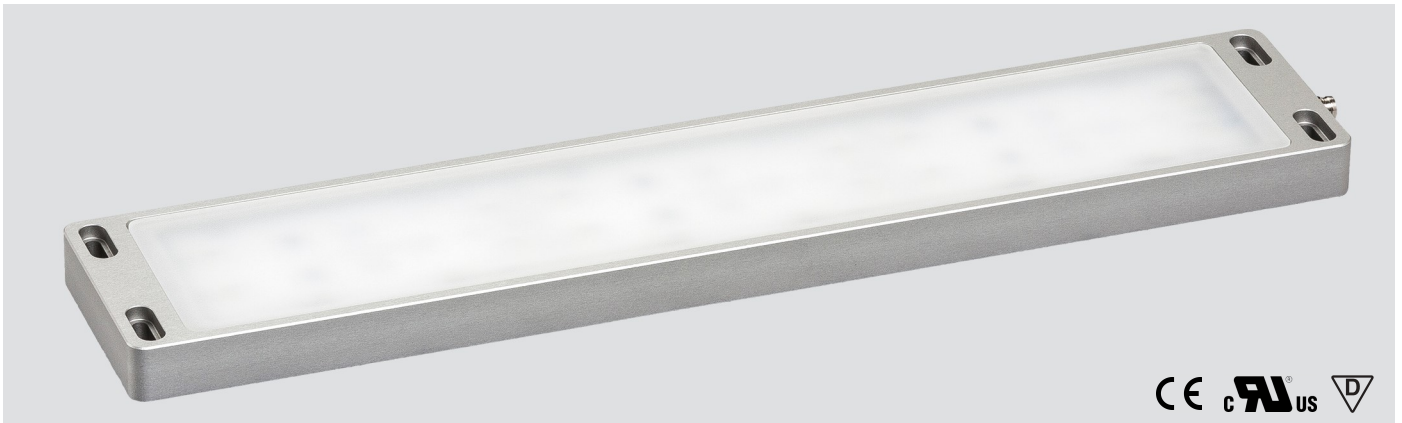


LED FLS 150 PMMA_d-M8-57

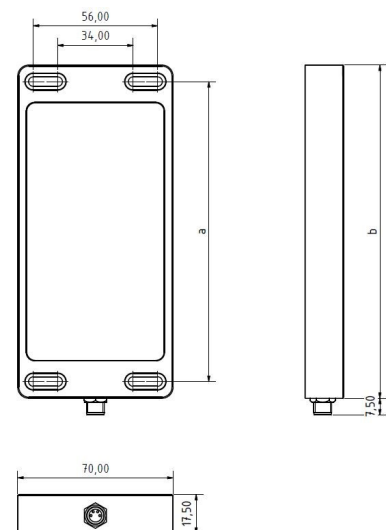
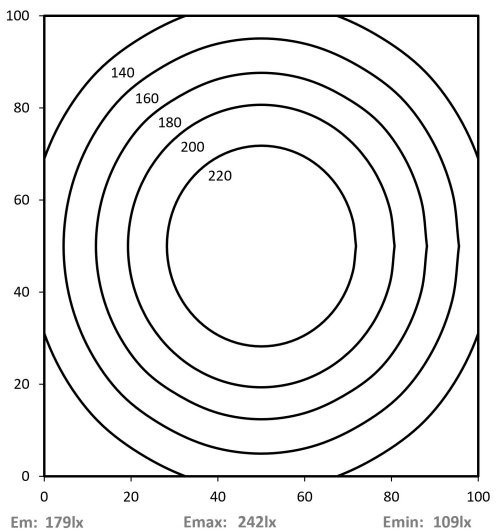
Art. Nr. 1-000000-06165

Ktl. Nr. 15070150

SANGEL[®]
Systemtechnik



Lichtfarbe / Light Colour	5700 K
Schutzart / Internal Protection	IP67
Netzanschluss / Main Supply	24 V DC
Dimmbar / Dimmable	nein
Bestückt / Fitted With	LED
Schutzklasse / Protection Class	3
Leistung / Power	5,5 W
Lichtstrom / Luminous Flux	804 lm
Farbtreue / Colour Rendering	RA / CRI ≥80
Betriebstemperatur / Operating Temp.	-20°C / 45°C
Lebensdauer / Lifetime	min. 60000 h
Optik / Optics	100°
Maße / Dimensions	a= 135, b= 150mm
Anschluss / Connection Type	M8, 4-pol, a-codiert
Kaskadierbar / Cascadable	nein
Gehäuse / Housing	Aluminium
Gewicht(Netto) / Weight(Net)	0,55 kg
Abdeckung / Cover	PMMA
Befestigung / Fastening	starr



LED FLS 250 ESGd-M8-57

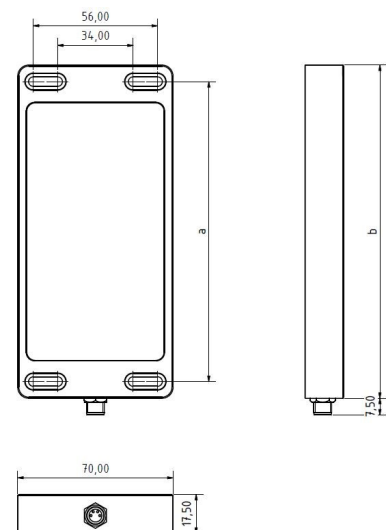
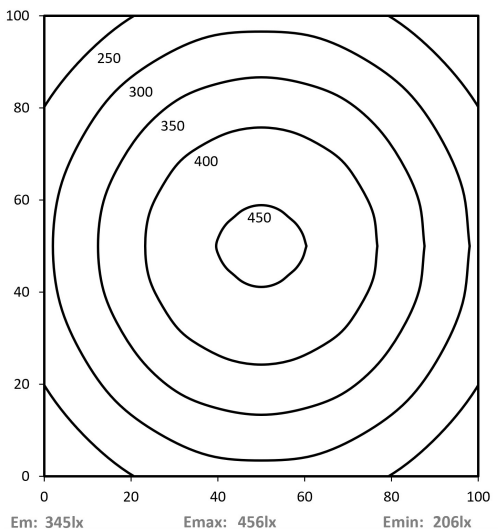
Art. Nr. 1-000000-06190

Ktl. Nr. 15070175

SANGEL[®]
Systemtechnik



Lichtfarbe / Light Colour	5700 K
Schutzart / Internal Protection	IP67
Netzanschluss / Main Supply	24 V DC
Dimmbar / Dimmable	nein
Bestückt / Fitted With	LED
Schutzklasse / Protection Class	3
Leistung / Power	10,9 W
Lichtstrom / Luminous Flux	1608 lm
Farbtreue / Colour Rendering	RA / CRI ≥80
Betriebstemperatur / Operating Temp.	-20°C / 45°C
Lebensdauer / Lifetime	min. 60000 h
Optik / Optics	100°
Maße / Dimensions	a= 235, b= 250mm
Anschluss / Connection Type	M8, 4-pol, a-codiert
Kaskadierbar / Cascadable	nein
Gehäuse / Housing	Aluminium
Gewicht(Netto) / Weight(Net)	0,8 kg
Abdeckung / Cover	ESG
Befestigung / Fastening	starr

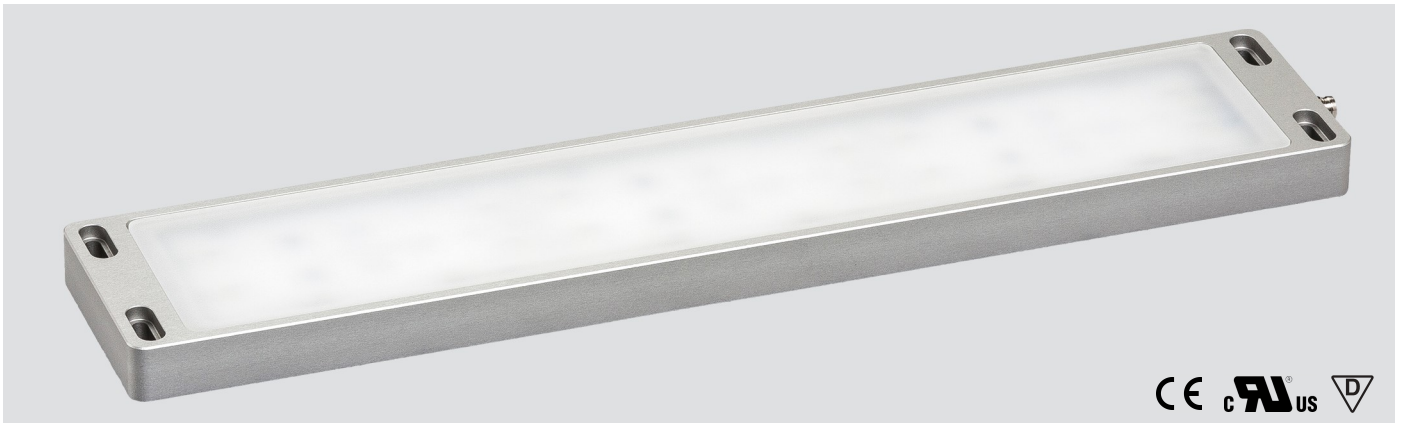


LED FLS 250 PMMA_d-M8-57

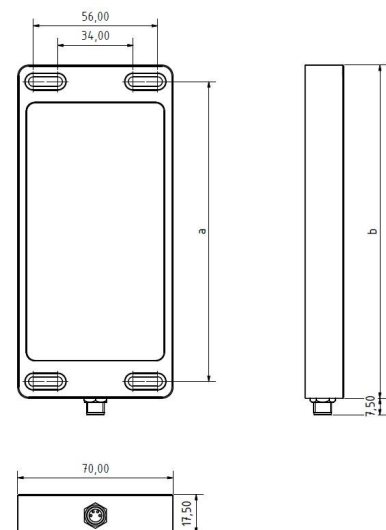
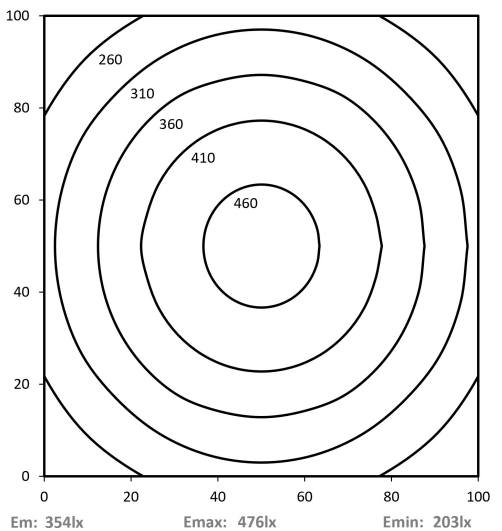
Art. Nr. 1-000000-06189

Ktl. Nr. 15070174

SANGEL[®]
Systemtechnik



Lichtfarbe / Light Colour	5700 K
Schutzart / Internal Protection	IP67
Netzanschluss / Main Supply	24 V DC
Dimmbar / Dimmable	nein
Bestückt / Fitted With	LED
Schutzklasse / Protection Class	3
Leistung / Power	10,9 W
Lichtstrom / Luminous Flux	1608 lm
Farbtreue / Colour Rendering	RA / CRI ≥80
Betriebstemperatur / Operating Temp.	-20°C / 45°C
Lebensdauer / Lifetime	min. 60000 h
Optik / Optics	100°
Maße / Dimensions	a= 235, b= 250mm
Anschluss / Connection Type	M8, 4-pol, a-codiert
Kaskadierbar / Cascadable	nein
Gehäuse / Housing	Aluminium
Gewicht(Netto) / Weight(Net)	0,75 kg
Abdeckung / Cover	PMMA
Befestigung / Fastening	starr

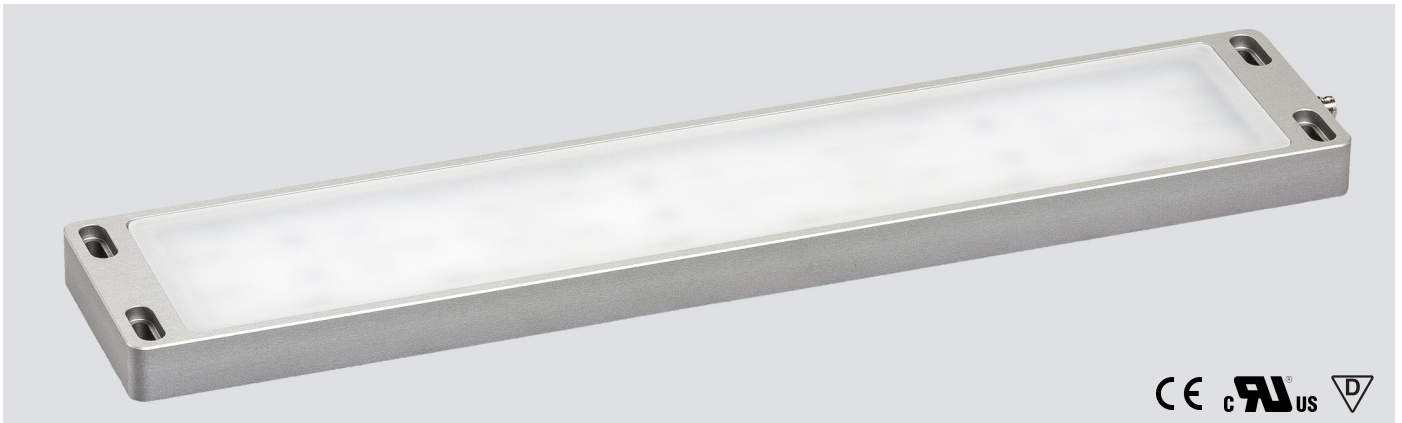


LED FLS 350 ESGd-M8-57

Art. Nr. 1-000000-06214

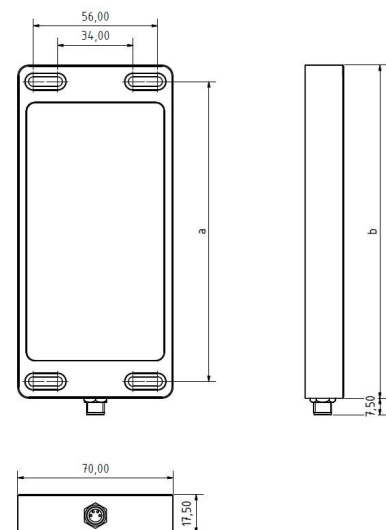
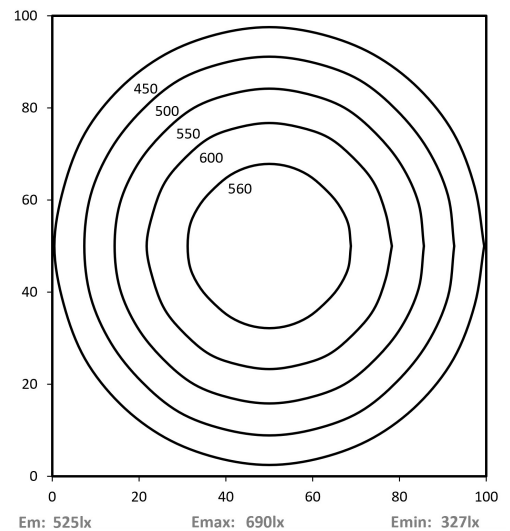
Ktl. Nr. 15070199

SANGEL[®]
Systemtechnik



Lichtfarbe / Light Colour	5700 K
Schutzart / Internal Protection	IP67
Netzanschluss / Main Supply	24 V DC
Dimmbar / Dimmable	nein
Bestückt / Fitted With	LED
Schutzklasse / Protection Class	3
Leistung / Power	16,3 W
Lichtstrom / Luminous Flux	2412 lm
Farbtreue / Colour Rendering	RA / CRI ≥80
Betriebstemperatur / Operating Temp.	-20°C / 45°C
Lebensdauer / Lifetime	min. 60000 h
Optik / Optics	100°
Maße / Dimensions	a= 335, b= 350mm
Anschluss / Connection Type	M8, 4-pol, a-codiert
Kaskadierbar / Cascadable	nein
Gehäuse / Housing	Aluminium
Gewicht(Netto) / Weight(Net)	1,1 kg
Abdeckung / Cover	ESG
Befestigung / Fastening	starr

Zubehör / Equipment



LED FLS 350 PMMA-d-M8-57

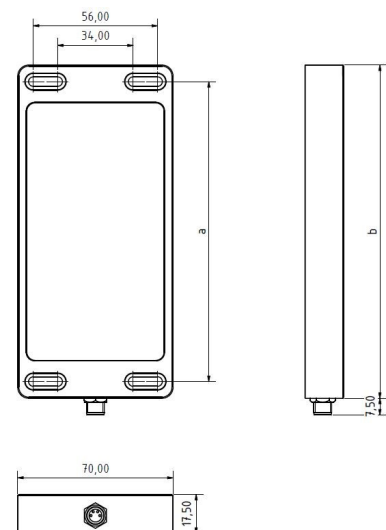
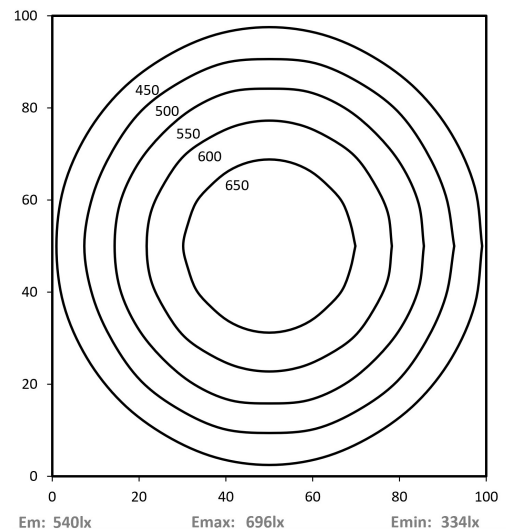
Art. Nr. 1-000000-06213

Ktl. Nr. 15070198

SANGEL[®]
Systemtechnik



Lichtfarbe / Light Colour	5700 K
Schutzart / Internal Protection	IP67
Netzanschluss / Main Supply	24 V DC
Dimmbar / Dimmable	nein
Bestückt / Fitted With	LED
Schutzklasse / Protection Class	3
Leistung / Power	16,3 W
Lichtstrom / Luminous Flux	2412 lm
Farbtreue / Colour Rendering	RA / CRI ≥80
Betriebstemperatur / Operating Temp.	-20°C / 45°C
Lebensdauer / Lifetime	min. 60000 h
Optik / Optics	100°
Maße / Dimensions	a= 335, b= 350mm
Anschluss / Connection Type	M8, 4-pol, a-codiert
Kaskadierbar / Cascadable	nein
Gehäuse / Housing	Aluminium
Gewicht(Netto) / Weight(Net)	0,95 kg
Abdeckung / Cover	PMMA
Befestigung / Fastening	starr
Zubehör / Equipment	

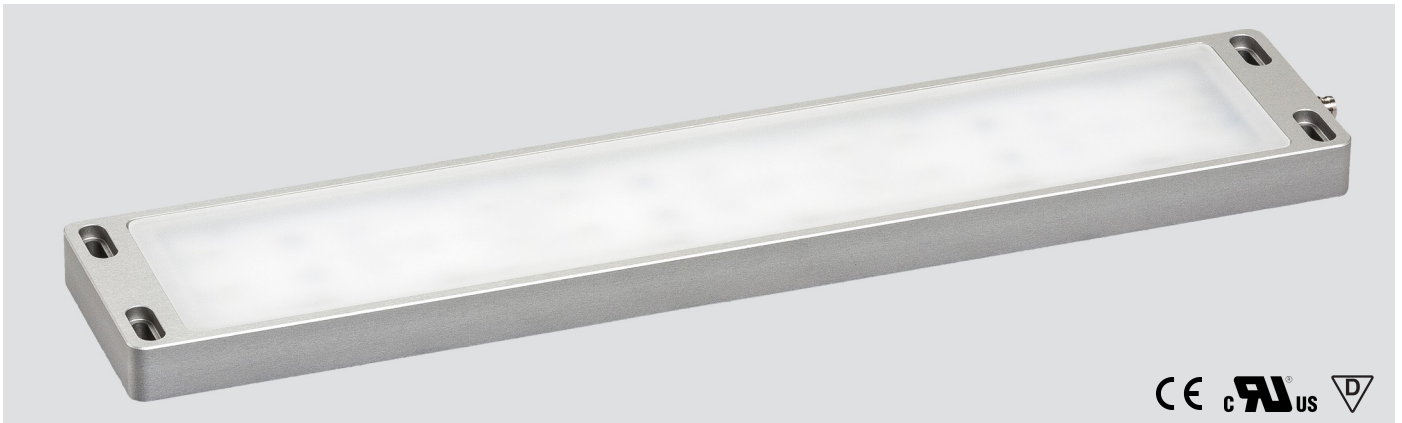


LED FLS 450 ESGd-M8-57

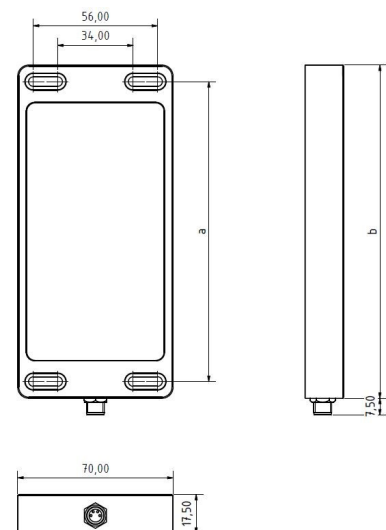
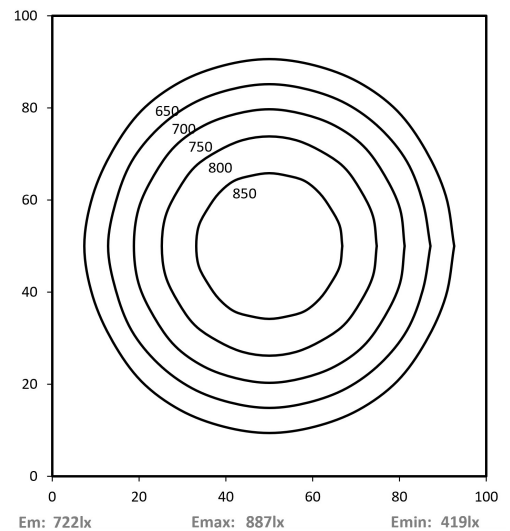
Art. Nr. 1-000000-06238

Ktl. Nr. 15070223

SANGEL[®]
Systemtechnik



Lichtfarbe / Light Colour	5700 K
Schutzart / Internal Protection	IP67
Netzanschluss / Main Supply	24 V DC
Dimmbar / Dimmable	nein
Bestückt / Fitted With	LED
Schutzklasse / Protection Class	3
Leistung / Power	22,2 W
Lichtstrom / Luminous Flux	3216 lm
Farbtreue / Colour Rendering	RA / CRI ≥80
Betriebstemperatur / Operating Temp.	-20°C / 45°C
Lebensdauer / Lifetime	min. 60000 h
Optik / Optics	100°
Maße / Dimensions	a= 435, b= 450mm
Anschluss / Connection Type	M8, 4-pol, a-codiert
Kaskadierbar / Cascadable	nein
Gehäuse / Housing	Aluminium
Gewicht(Netto) / Weight(Net)	1,3 kg
Abdeckung / Cover	ESG
Befestigung / Fastening	starr
Zubehör / Equipment	

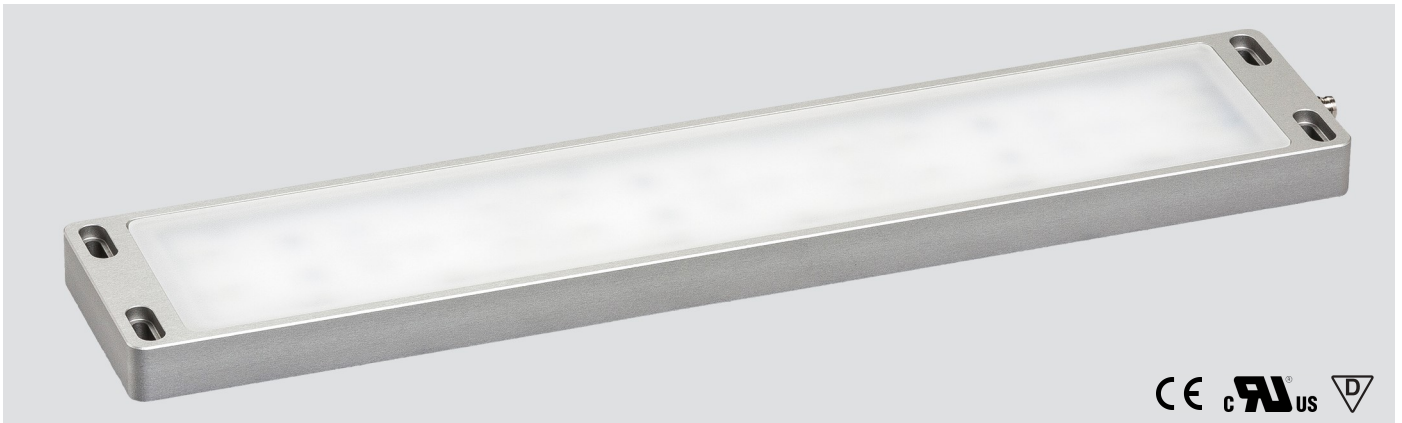


LED FLS 450 PMMA-d-M8-57

Art. Nr. 1-000000-06237

Ktl. Nr. 15070222

SANGEL[®]
Systemtechnik



Lichtfarbe / Light Colour	5700 K
Schutzart / Internal Protection	IP67
Netzanschluss / Main Supply	24 V DC
Dimmbar / Dimmable	nein
Bestückt / Fitted With	LED
Schutzklasse / Protection Class	3
Leistung / Power	22,2 W
Lichtstrom / Luminous Flux	3216 lm
Farbtreue / Colour Rendering	RA / CRI ≥80
Betriebstemperatur / Operating Temp.	-20°C / 45°C
Lebensdauer / Lifetime	min. 60000 h
Optik / Optics	100°
Maße / Dimensions	a= 435, b= 450mm
Anschluss / Connection Type	M8, 4-pol, a-codiert
Kaskadierbar / Cascadable	nein
Gehäuse / Housing	Aluminium
Gewicht(Netto) / Weight(Net)	1,15 kg
Abdeckung / Cover	PMMA
Befestigung / Fastening	starr

